

WAAS CH <b>45617</b> <b>W19A</b>	APP CRS <b>192°</b>	Rwy Idg TDZE Apt Elev	<b>4000</b> <b>85</b> <b>85</b>
--	------------------------	-----------------------------	---------------------------------------

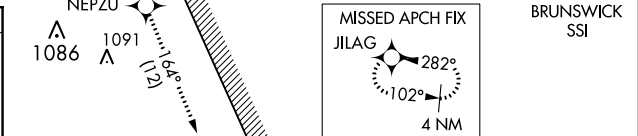
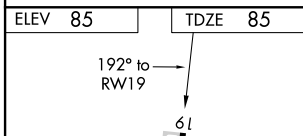
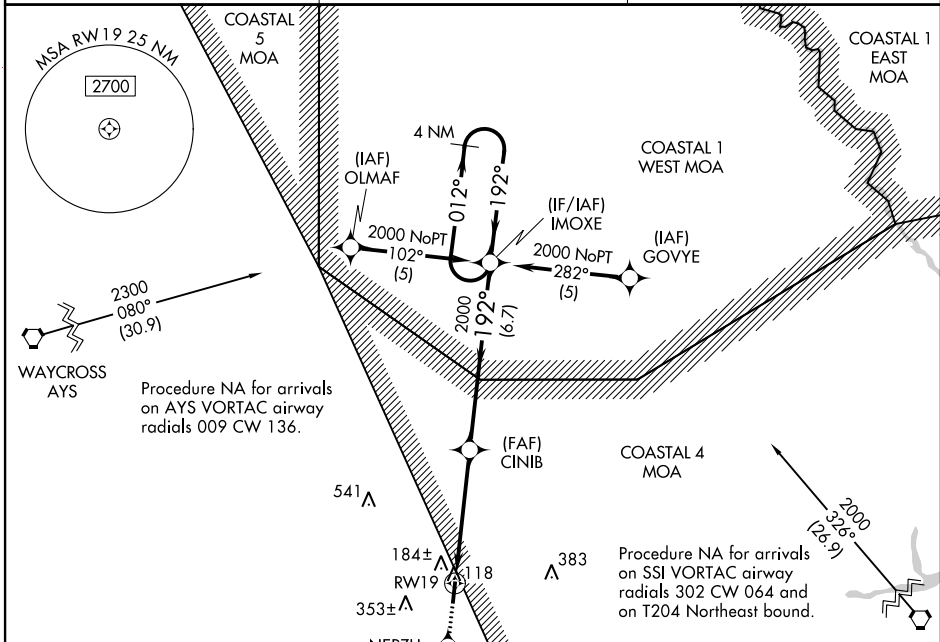
# RNAV (GPS) Z RWY 19

BRANTLEY COUNTY (4J1)

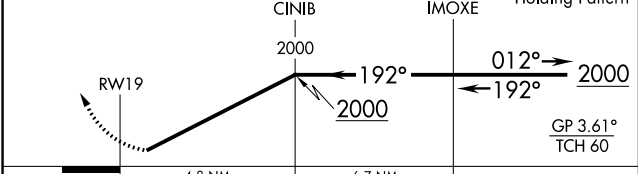
**Baro-VNAV NA. DME/DME RNP-0.3 NA. Helicopter visibility reduction below 1 SM NA. Use Brunswick Golden Isles altimeter setting, when not received, use Waycross altimeter setting and increase all DA 6 feet. Night landing: Rwy 19 NA.**

**MISSED APPROACH:** Climb to 2200 direct NEPZU and on track 164° to JILAG and hold.

<b>BQK AWOS-3</b> <b>124.175</b>	<b>JACKSONVILLE CENTER</b> <b>127.575 269.025</b>	<b>CTAF</b> <b>122.9</b>
-------------------------------------	--	-----------------------------



2200	NEPZU	tr 164°	JILAG	VGSI and RNAV glidepath not coincident (VGSI Angle 3.00/TCH 46).
------	-------	---------	-------	--



CATEGORY	A	B	C	D
LPV DA	489-1 <sup>1</sup> / <sub>8</sub>	404 (500-1 <sup>1</sup> / <sub>8</sub> )		NA
LNAV/VNAV DA	648-1 <sup>5</sup> / <sub>8</sub>	563 (600-1 <sup>5</sup> / <sub>8</sub> )		NA

SE-4, 10 SEP 2020 to 08 OCT 2020

SE-4, 10 SEP 2020 to 08 OCT 2020