

|  |                        |   |
|--|------------------------|---|
| WAAS<br>CH <b>50133</b><br><b>W11A</b> | APP CRS<br><b>105°</b> | Rwy Idg <b>3302</b><br>TDZE <b>1183</b><br>Apt Elev <b>1183</b> |
|--|------------------------|---|

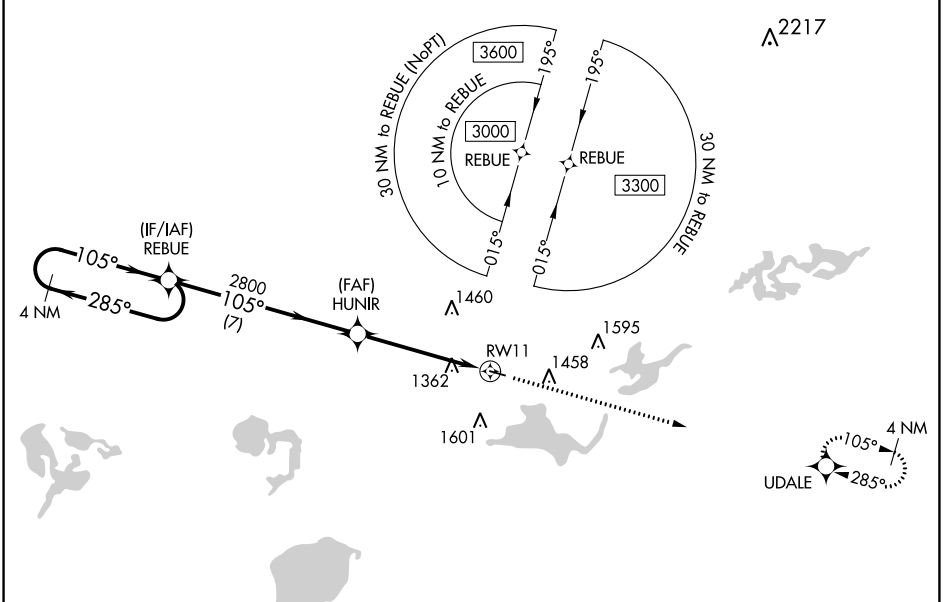
# RNAV (GPS) RWY 11

PAYNESVILLE MUNI (PEX)

**⚠** Baro-VNAV and VDP NA when using Litchfield altimeter setting. For uncompensated Baro-VNAV systems, LNAV/VNAV NA below -17°C (2°F) or above 54°C (130°F). DME/DME RNP-0.3 NA. When local altimeter setting not received, use Litchfield altimeter setting and increase all DA 51 feet and all MDA 60 feet; increase LPV and LNAV/VNAV all Cats visibility 1/8 mile and LNAV Cat C and Circling Cat C visibility 1/4 mile.

**⚠** MISSED APPROACH: Climb to 3000 direct UDALE and hold.

|                           |  |                        |
|---------------------------|--|------------------------|
| AWOS-3PT<br><b>120,35</b> | MINNEAPOLIS CENTER<br><b>125.5 323.1</b> | CTAF<br><b>122.9 0</b> |
|---------------------------|--|------------------------|



|                      |                            |                               |                            |
|----------------------|----------------------------|-------------------------------|----------------------------|
| ELEV 1183            |                            | TDZE 1183                     |                            |
| 4 NM Holding Pattern |                            | 3000 UDALE                    |                            |
| GP 3.00° TCH 42      |                            | *1.4 NM to RWY 11 *LNAV only. |                            |
| 7 NM                 |                            | 3.5 NM                        |                            |
| CATEGORY             | A                          | B                             | C                          |
| LPV DA               | 1383-1 200 (200-1)         |                               | NA                         |
| LNAV/VNAV DA         | 1653-1 1/8 470 (500-1 1/8) |                               | NA                         |
| LNAV MDA             | 1680-1                     | 497 (500-1)                   | 1680-1 1/8 497 (500-1 1/8) |
| CIRCLING             | 1680-1 497 (500-1)         | 1700-1 517 (600-1)            | 1780-1 1/2 597 (600-1 1/2) |

NC-1, 10 SEP 2020 to 08 OCT 2020

NC-1, 10 SEP 2020 to 08 OCT 2020