

| | | | |
|--|------------------------|---|-------------|
| WAAS CH 65633 W29A | APP CRS 285° | Rwy Idg TDZE 1183 Apt Elev 1183 | 3302 |
|--|------------------------|---|-------------|

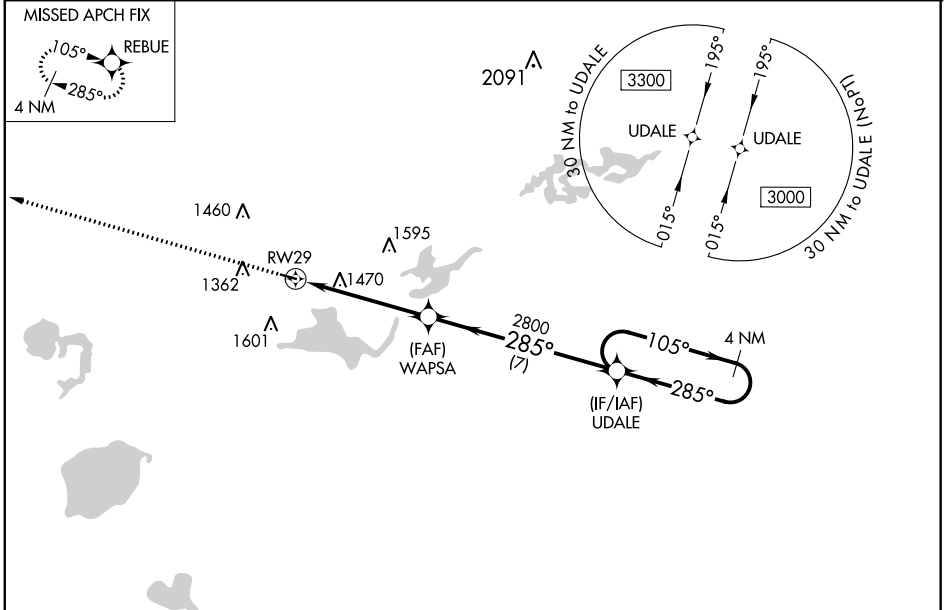
RNAV (GPS) RWY 29

PAYNESVILLE MUNI (PEX)

⚠ Baro-VNAV and VDP NA when using Litchfield altimeter setting. For uncompensated Baro-VNAV systems, LNAV/VNAV NA below -17°C (2°F) or above 54°C (130°F). DME/DME RNP-0.3 NA. Helicopter visibility reduction below ¾ SM NA. When local altimeter not received, use Litchfield altimeter setting and increase all DA 51 feet and all MDA 60 feet; increase LNAV/VNAV all Cats and LNAV and Circling Cat C visibility ¼ mile.

MISSED APPROACH:
Climb to 3000 direct REBUE and hold.

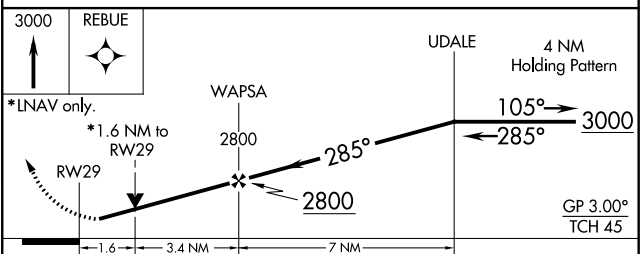
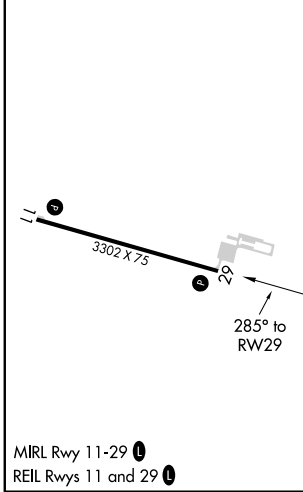
| | | |
|---------------------------|--|----------------------|
| AWOS-3PT 120.35 | MINNEAPOLIS CENTER 125.5 323.1 | CTAF 122.9 |
|---------------------------|--|----------------------|



NC-1, 10 SEP 2020 to 08 OCT 2020

NC-1, 10 SEP 2020 to 08 OCT 2020

| | |
|-----------|-----------|
| ELEV 1183 | TDZE 1183 |
|-----------|-----------|



| CATEGORY | A | B | C | D |
|--------------|---------|-------------|-------------------------|----|
| LPV DA | 1383-1 | | 200 (200-1) | NA |
| LNAV/VNAV DA | 1810-2¼ | | 627 (700-2¼) | NA |
| LNAV MDA | 1720-1 | 537 (600-1) | 1720-1½ 537 (600-1½) | NA |
| CIRCLING | 1720-1 | 537 (600-1) | 1780-1½ 597 (600-1½) | NA |