

| | | | |
|--|------------------------|-----------------------------|---|
| WAAS CH 82724 W02A | APP CRS 019° | Rwy Idg TDZE Apt Elev | 3500 1772 1789 |
|--|------------------------|-----------------------------|---|

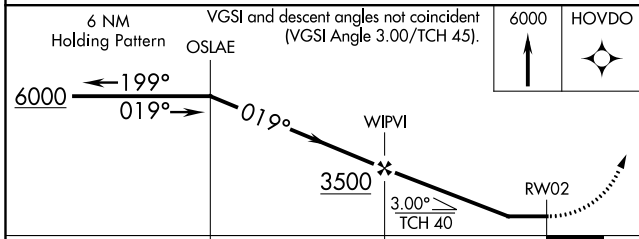
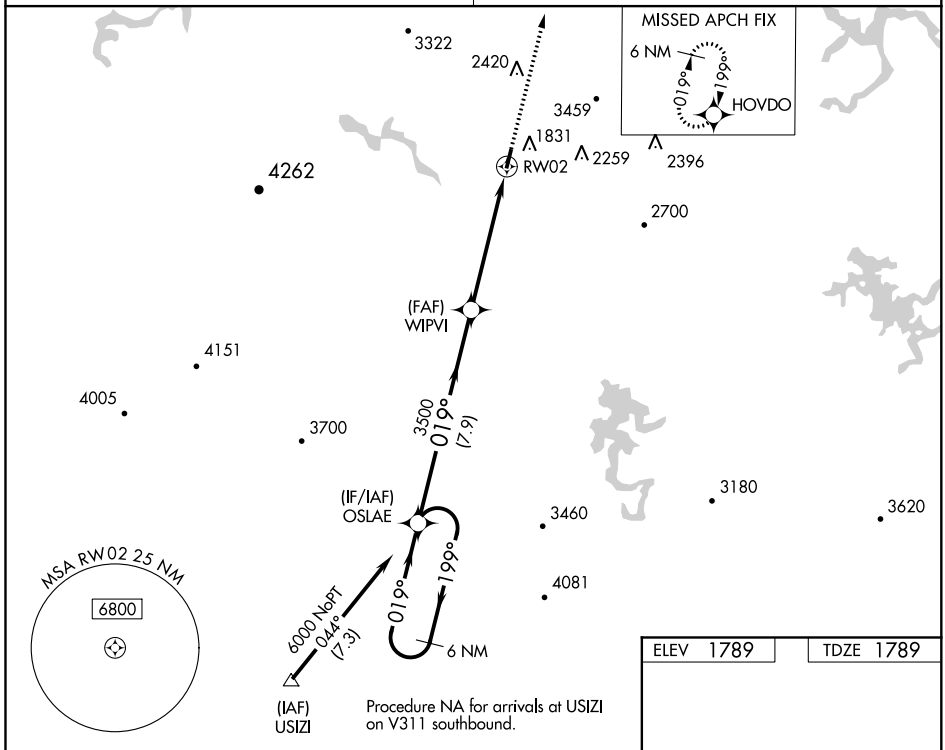
RNAV (GPS) RWY 2

MARTIN CAMPBELL FIELD (1A3)

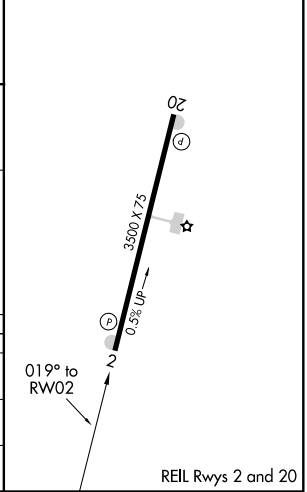
⚠ DME/DME RNP-0.3 NA. Use Western Carolina Rgnl altimeter setting, when not received, use Dalton Muni altimeter setting and increase all MDA 160 feet, and increase LNAV Cats A and B visibility ¼ mile and Cat C ½ mile, and LP Cat A ¼ mile. Procedure NA at night. Rwy 2 helicopter visibility reduction below 1 SM NA.

⚠ NA MISSED APPROACH: Climb to 6000 direct HOVDO and hold, continue climb in hold to 6000.

| | |
|--|------------------------|
| ATLANTA CENTER 133.1 342.425 | (CTAF) 122.9 |
|--|------------------------|



| | |
|-----------|-----------|
| ELEV 1789 | TDZE 1789 |
|-----------|-----------|



| CATEGORY | A | B | C | D |
|----------|---------------------------|---------------------------|-------------------------|----|
| LP MDA | 2600-1 811 (900-1) | 2600-1¼ 811 (900-1¼) | 2600-2½ 811 (900-2½) | NA |
| LNAV MDA | 2600-1 811 (900-1) | 2600-1¼ 811 (900-1¼) | 2600-2½ 811 (900-2½) | NA |
| CIRCLING | 2880-1¼ 1091 (1100-1¼) | 2880-1½ 1091 (1100-1½) | 2880-3 1091 (1100-3) | NA |

SE-1, 10 SEP 2020 to 08 OCT 2020

SE-1, 10 SEP 2020 to 08 OCT 2020