

WAAS CH <b>82432</b> <b>W18A</b>	APP CRS <b>176°</b>	Rwy Idg TDZE Apt Elev	<b>5000</b> <b>1999</b> <b>1999</b>
--	------------------------	-----------------------------	---

# RNAV (GPS) RWY 18

ROOKS COUNTY RGNL (RCP)

**NA** Baro-VNAV NA. Use Hill City altimeter setting; when not received, use Hays altimeter setting. Circling NA west of Rwy 18-36. DME/DME RNP-0.3 NA.

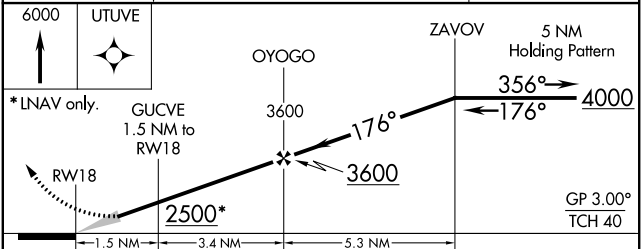
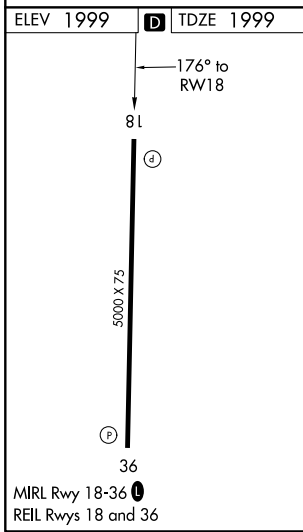
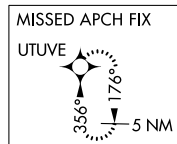
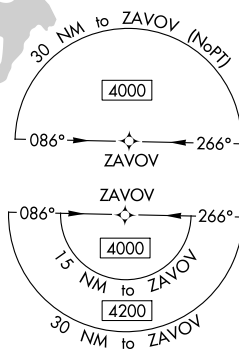
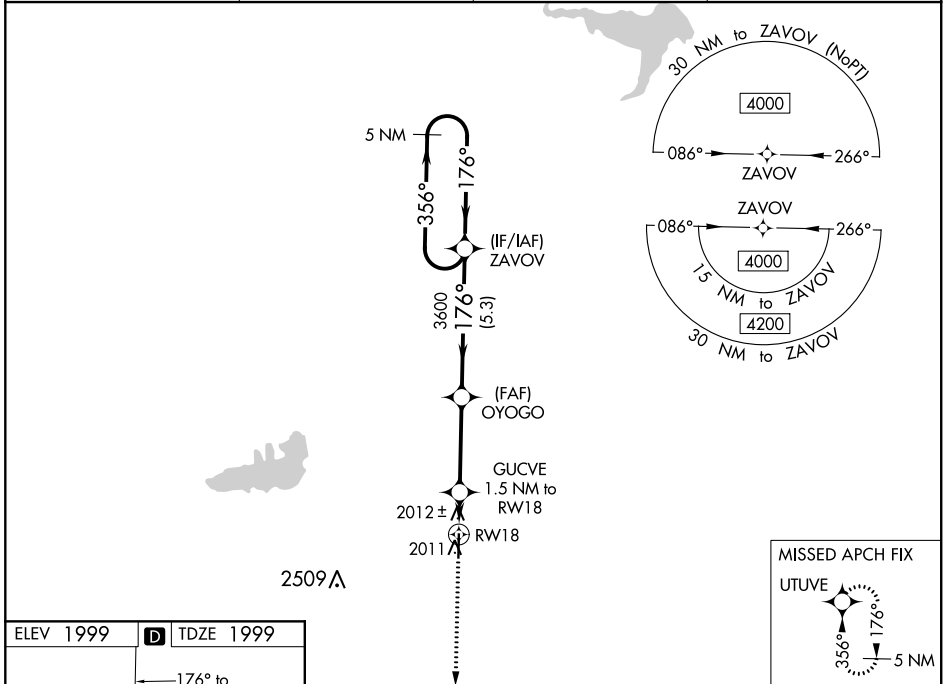
**MISSED APPROACH:** Climb to 6000 direct UTUVE and hold, continue climb-in-hold to 6000.

AWOS-AV  
**120.075**

HLC ASOS  
**118.425**

DENVER CENTER  
**132.7 226.675**

CTAF  
**122.9**



CATEGORY	A	B	C	D
LPV DA	2290-1	291 (300-1)		NA
LNAV/VNAV DA	2340-1 $\frac{1}{8}$	341 (400-1 $\frac{1}{8}$ )		NA
LNAV MDA	2360-1	361 (400-1)		NA
<b>C</b> CIRCLING	2460-1 461 (500-1)	2480-1 481 (500-1)	2500-1 $\frac{1}{2}$ 501 (600-1 $\frac{1}{2}$ )	NA

NC-2, 10 SEP 2020 to 08 OCT 2020

NC-2, 10 SEP 2020 to 08 OCT 2020