

APP CRS 257°	Rwy Idg 5001
	TDZE 1883
	Apt Elev 1882

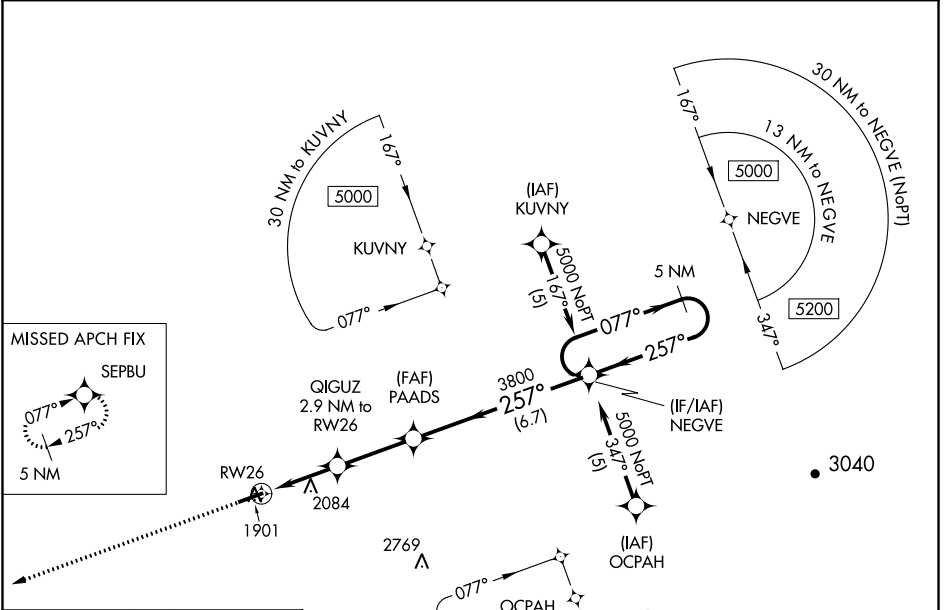
RNAV (GPS) RWY 26

APPALACHIAN RGNL (E,B,D)

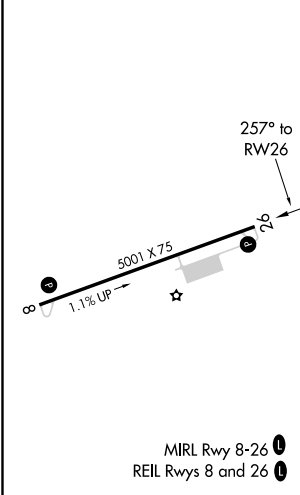
NA Use Pineville altimeter setting, when not received, use Beckley altimeter setting and increase all MDA 140 feet; increase LNAV Cat A and Circling Cat A, C and D visibility ¼ mile. DME/DME RNP-0.3 NA.

MISSED APPROACH: Climb to 5000 direct SEPBU and hold.

116 AWOS-3 120.625	INDIANAPOLIS CENTER 126.575 257.85	UNICOM 122.8 (CTAF) 0
------------------------------	--	---------------------------------



ELEV 1882	TDZE 1883
------------------	------------------



	5000	SEPBU	NEGVE	5 NM Holding Pattern
		QIGUZ 2.9 NM to RW26	PAADS	
		2840	3800	5000
		2.9 NM	2.9 NM	6.7 NM
CATEGORY	A	B	C	D
LNAV MDA	2660-1 777 (800-1)	2660-1¼ 777 (800-1¼)	2660-2½	777 (800-2½)
CIRCLING	2680-1 798 (800-1)	2680-1¼ 798 (800-1¼)	2680-2½ 798 (800-2½)	2720-2¾ 838 (900-2¾)

NE-4, 10 SEP 2020 to 08 OCT 2020

NE-4, 10 SEP 2020 to 08 OCT 2020