

APP CRS 034°	Rwy Idg TDZE Apt Elev	N/A N/A 526
------------------------	-----------------------------	--

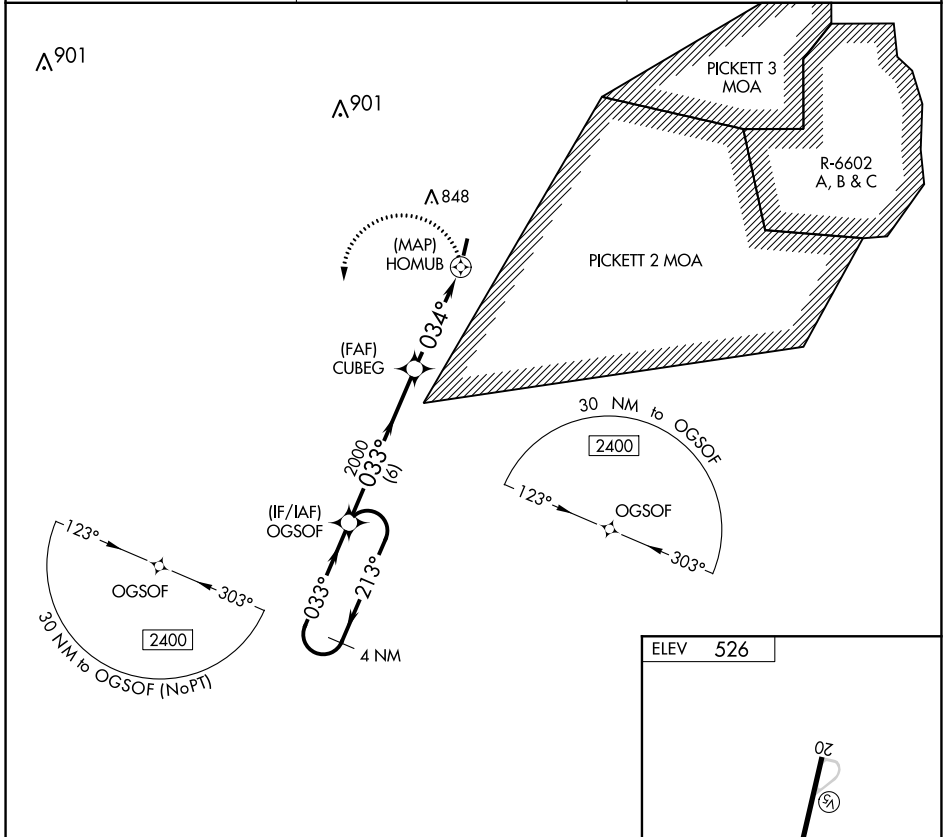
RNAV (GPS)-A

LUNENBURG COUNTY (W31)

⚠ Helicopter visibility reduction below 1 SM NA.
⚠ DME/DME RNP-0.3 NA. Procedure NA at night.
 When local altimeter setting not received, use Blackstone altimeter setting and increase all MDA 60 feet.

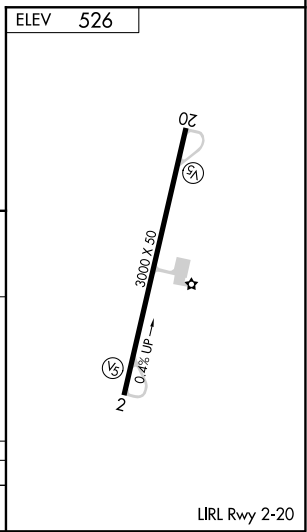
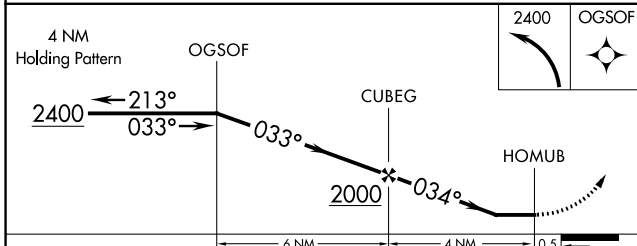
MISSED APPROACH: Climbing left turn to 2400 direct OGSOF and hold.

AWOS-3 123.875	WASHINGTON CENTER 118.75 377.1	UNICOM 122.7 (CTAF)
--------------------------	--	-------------------------------



NE-3, 10 SEP 2020 to 08 OCT 2020

NE-3, 10 SEP 2020 to 08 OCT 2020



CATEGORY	A	B	C	D
CIRCLING	1000-1 474 (500-1)	1080-1 554 (600-1)	NA	

LIRL Rwy 2-20