

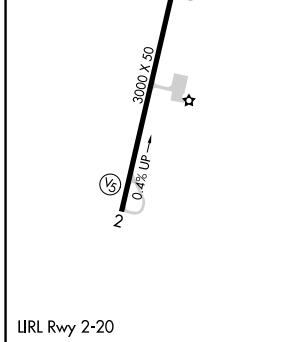
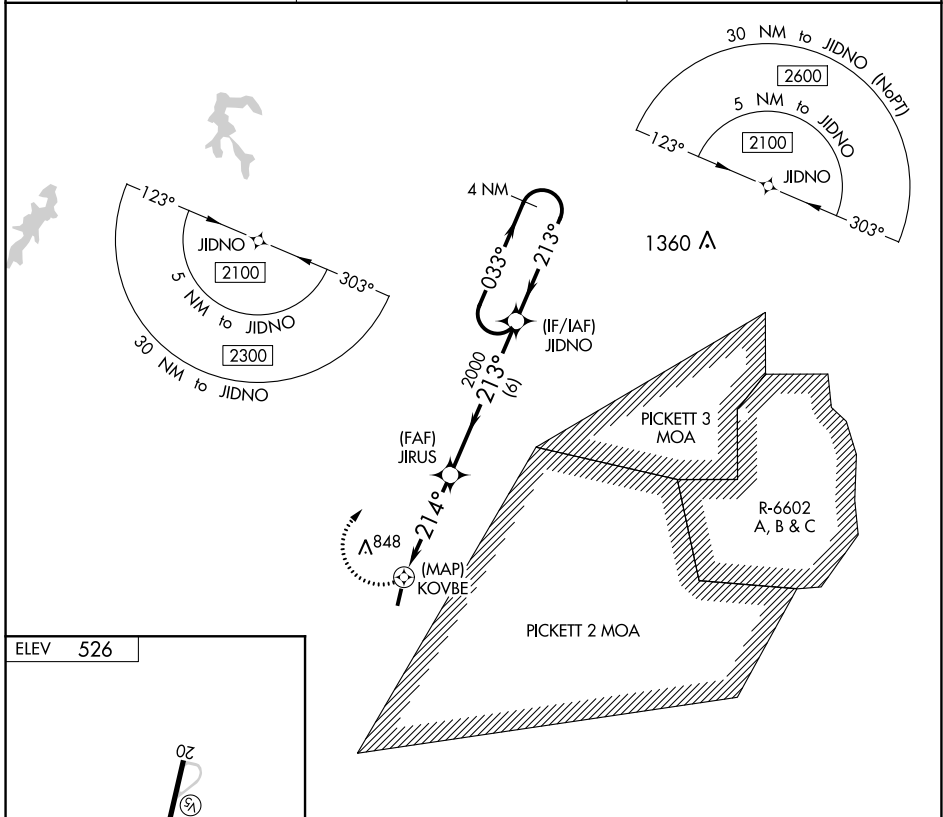
APP CRS 214°	Rwy Idg TDZE Apt Elev	N/A N/A 526
------------------------	-----------------------------	--

RNAV (GPS)-B
LUNENBURG COUNTY (W31)

⚠ Helicopter visibility reduction below 1 SM NA. DME/DME RNP-0.3 NA. Procedure NA at night. When local altimeter setting not received, use Blackstone altimeter setting and increase all MDA 60 feet.

MISSED APPROACH: Climbing right turn to 2100 direct JIDNO and hold.

AWOS-3 123.875	WASHINGTON CENTER 118.75 377.1	UNICOM 122.7 (CTAF)
--------------------------	--	-------------------------------



ELEV 526	2100 JIDNO	4 NM Holding Pattern		
JIRUS	JIDNO	2100		
KOVBE	2000	213°		
0.5	4 NM	6 NM		
CATEGORY	A	B	C	D
C CIRCLING	1540-3	1014 (1100-3)	NA	

NE-3, 10 SEP 2020 to 08 OCT 2020

NE-3, 10 SEP 2020 to 08 OCT 2020