

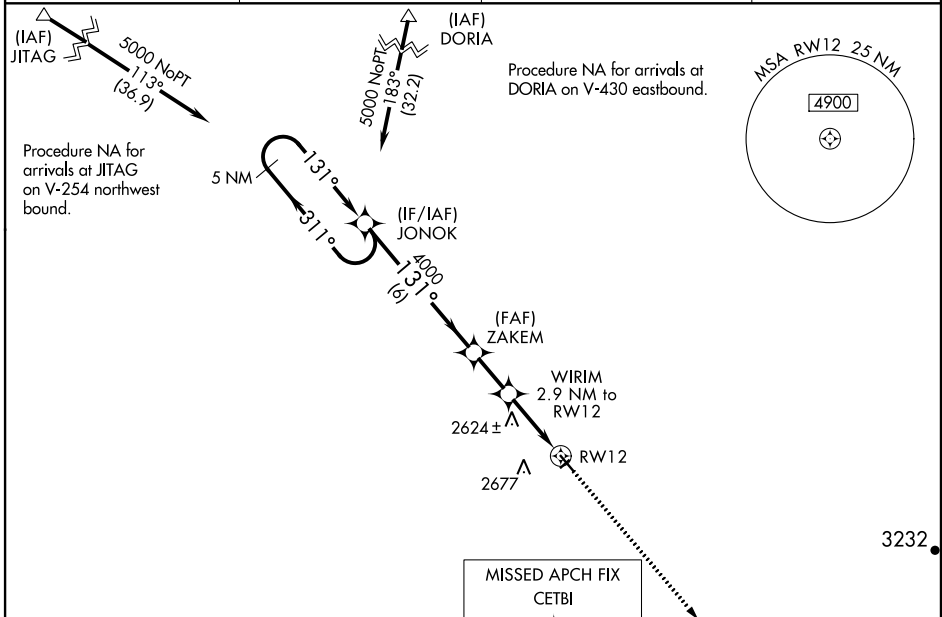
WAAS CH 86930 W12A	APP CRS 131°	Rwy Idg TDZE Apt Elev	4100 2429 2441
--	------------------------	-----------------------------	---

RNAV (GPS) RWY 12

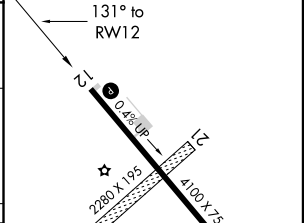
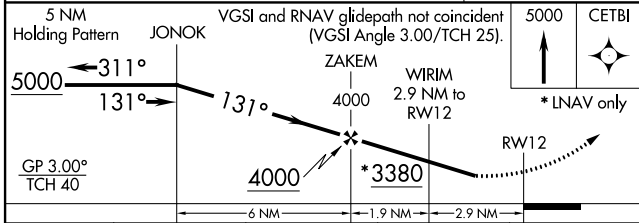
CIRCLE TOWN COUNTY (4U6)

RNP APCH.	Baro-VNAV NA when using Glendive altimeter setting. When local altimeter setting not received, use Glendive altimeter setting. Rwy 12 helicopter visibility reduction below ¼ SM NA. Circling NA to Rwys 3 and 21. For uncompensated Baro-VNAV systems, LNAV/VNAV NA below -19°C or above 54°C.	MISSED APPROACH: Climb to 5000 direct CETBI and hold.
-----------	---	--

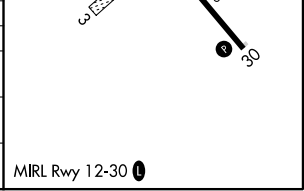
AWOS-2 119.025	GDV AWOS 3-PT 135.075	SALT LAKE CENTER 126.85 305.2	UNICOM 122.8 (CTAF) 0
--------------------------	---------------------------------	---	---------------------------------



ELEV	2441	TDZE	2429
------	------	------	------



CATEGORY	A	B	C	D
LPV DA		2970-17/8	541 (600-17/8)	
LNAV/VNAV DA		3164-23/4	735 (800-23/4)	
LNAV MDA	3180-1 751 (800-1)	3180-1 1/4 751 (800-1 1/4)	3180-2	751 (800-2)
CIRCLING	3300-1 1/4 859 (900-1 1/4)	3320-1 1/4 879 (900-1 1/4)	3360-2 3/4 919 (1000-2 3/4)	3380-3 939 (1000-3)



NW-1, 10 SEP 2020 to 08 OCT 2020

NW-1, 10 SEP 2020 to 08 OCT 2020