

# HI-VOR/DME or TACAN RWY 28R

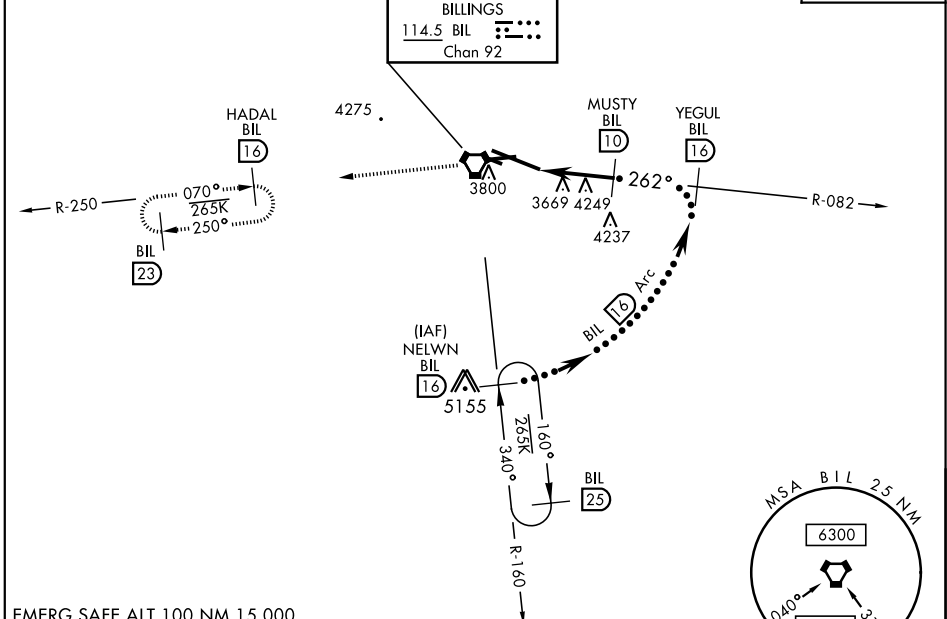
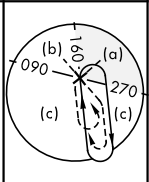
VORTAC BIL <b>114.5</b> Chan <b>92</b>	APCH CRS <b>262°</b>	Rwy Idg <b>10,518</b> THRE <b>3488</b> Arprt Elev <b>3652</b>
--	-------------------------	---

JAL-48 [USAF]

BILLINGS LOGAN INTL (KBIL)

**▽** MISSED APPROACH: Climb to 9000 on BIL VORTAC R-082 to BIL VORTAC, and on BIL VORTAC R-250 to HADAL/16 DME and hold, continue Climb-in-Hold to 9000.

ATIS <b>126.3</b>	BILLINGS APP CON <b>120.5 284.6</b>	BILLINGS TOWER <b>127.2 257.8</b>	GND CON <b>121.9</b>	CLNC DEL <b>121.9</b>
----------------------	--	--------------------------------------	-------------------------	--------------------------

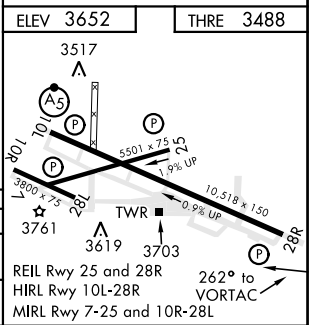


NW-1, 08 OCT 2020 to 05 NOV 2020

NW-1, 08 OCT 2020 to 05 NOV 2020

EMERG SAFE ALT 100 NM 15,000

9000	BIL	HADAL BIL	NELWN R-160
↑	⬆	⬆	⬆
VORTAC	LATDI 4.6	WYLED 5.8 6.9	MUSTY 10
	2.3 NM	3.1 NM	FL200
		4260	5200
		262°	2.88°
			TCH 56
			Arc
CATEGORY	C	D	E
S-28R	3940-1 452 (300-1)		
CIRCLING	4180-1 1/2 528 (600-1 1/2)	4220-2 568 (600-2)	4580-3 928 (1000-3)



# HI-VOR/DME or TACAN RWY 28R