

LOC/DME I-BMO 111.5 Chan 52	APP CRS 282°	Rwy ldg TDZE Apt Elev	10518 3517 3652
---	------------------------	-----------------------------	--

ILS or LOC RWY 28R

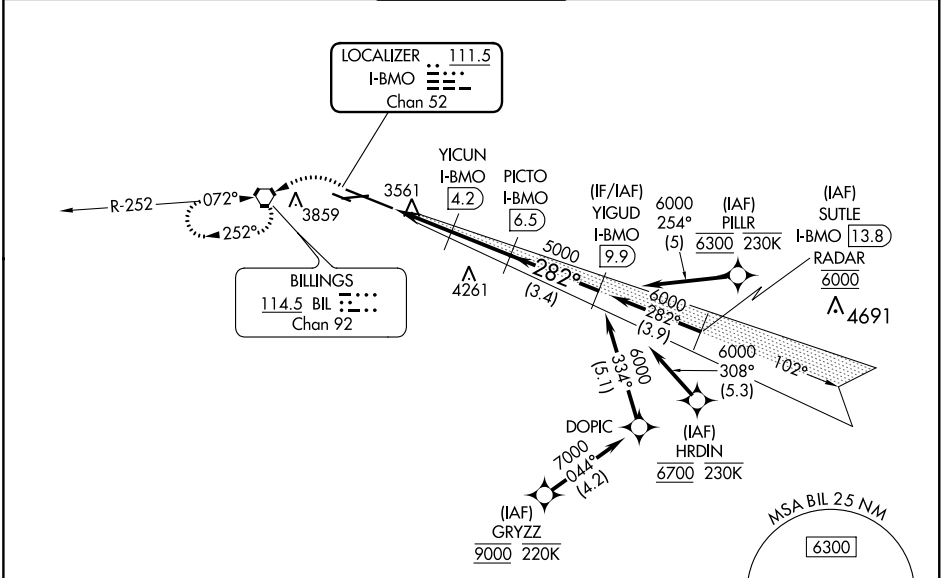
BILLINGS LOGAN INTL (BIL)

RNAV 1.
RNAV 1-GPS or RADAR required for procedure entry.
DME required.
From PILLR, GRZZ, HRDIN: RNAV 1-GPS required.

⚠ Rwy 28R helicopter visibility reduction below 3/4 SM NA.

MISSED APPROACH: Climb to 4000 then climbing left turn to 6000 direct BIL VORTAC and hold, continue climb-in-hold to 6000.

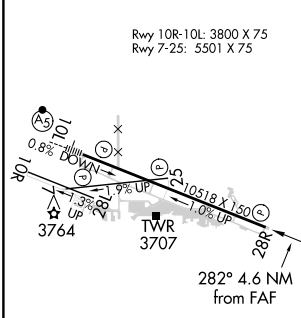
ATIS 126.3	BILLINGS APP CON 120.5 284.6	BILLINGS TOWER 127.2 257.8	GND CON 121.9	CLNC DEL 121.9
----------------------	--	--------------------------------------	-------------------------	--------------------------



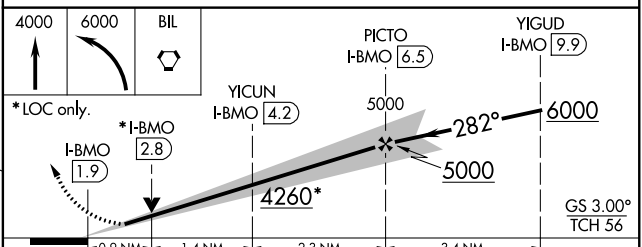
NW-1, 08 OCT 2020 to 05 NOV 2020

NW-1, 08 OCT 2020 to 05 NOV 2020

ELEV 3652	D TDZE 3517
-----------	--------------------



HIRL Rwy 10L-28R
REIL Rwy 25 and 28R
MIRL Rwy 7-25 and 10R-28L



CATEGORY	A	B	C	D
S-ILS 28R		3767-3/4	250 (200-3/4)	
S-LOC 28R		3840-1	323 (200-1)	
C CIRCLING	4100-1 448 (500-1)	4160-1 508 (600-1)	4180-1 1/2 528 (600-1 1/2)	4580-3 928 (1000-3)