

WAAS CH 50122 W10A	APP CRS 102°	Rwy Idg TDZE 3585 Apt Elev 3652
--	------------------------	---

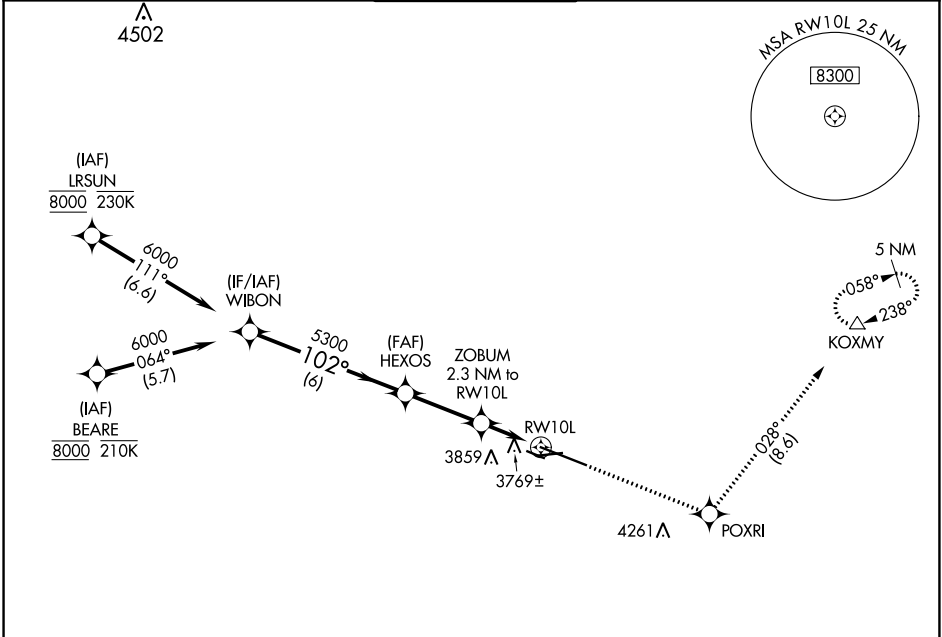
RNAV (GPS) RWY 10L

BILLINGS LOGAN INTL (BIL)

⚠ For uncompensated Baro-VNAV systems, LNAV/VNAV NA below -24°C (-11°F) or above 50°C (123°F). DME/DME RNP-0.3 NA. #RVR 1800 authorized with use of FD or AP or HUD to DA.

MALS MISSED APPROACH: Climb to 6000 direct POXRI and on track 028° to KOXMY and hold.

ATIS 126.3	BILLINGS APP CON 120.5 284.6	BILLINGS TOWER 127.2 257.8	GND CON 121.9	CLNC DEL 121.9
----------------------	--	--------------------------------------	-------------------------	--------------------------



NW-1, 08 OCT 2020 to 05 NOV 2020

NW-1, 08 OCT 2020 to 05 NOV 2020

ELEV 3652	D	TDZE 3585
-----------	----------	-----------

WIBON	HEXOS	ZOBUM 2.3 NM to RW10L	POXRI	tr 028°	KOXMY
6000	5300	*1.3 NM to RW10L			
GP 3.00° TCH 51	*4360				
	6 NM	2.9 NM	1 NM	1.3 NM	
CATEGORY	A	B	C	D	
LPV DA#	3785/24		200 (200-½)		
LNAV/VNAV DA	4041/60		456 (400-1¼)		
LNAV MDA	4020/24	435 (400-½)	4020/40	435 (400-¾)	
C CIRCLING	4100-1 448 (500-1)	4160-1 508 (600-1)	4180-1½ 528 (600-½)	4580-3 928 (1000-3)	

