

WAAS CH <b>87127</b> <b>W07A</b>	APP CRS <b>074°</b>	Rwy Idg TDZE Apt Elev	<b>5501</b> <b>3636</b> <b>3652</b>
--	------------------------	-----------------------------	---

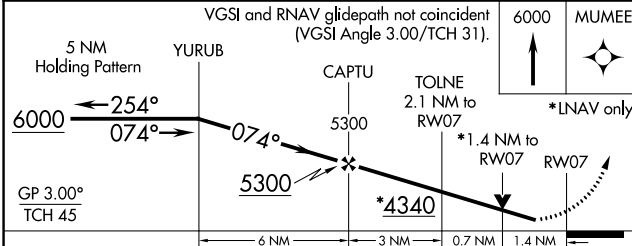
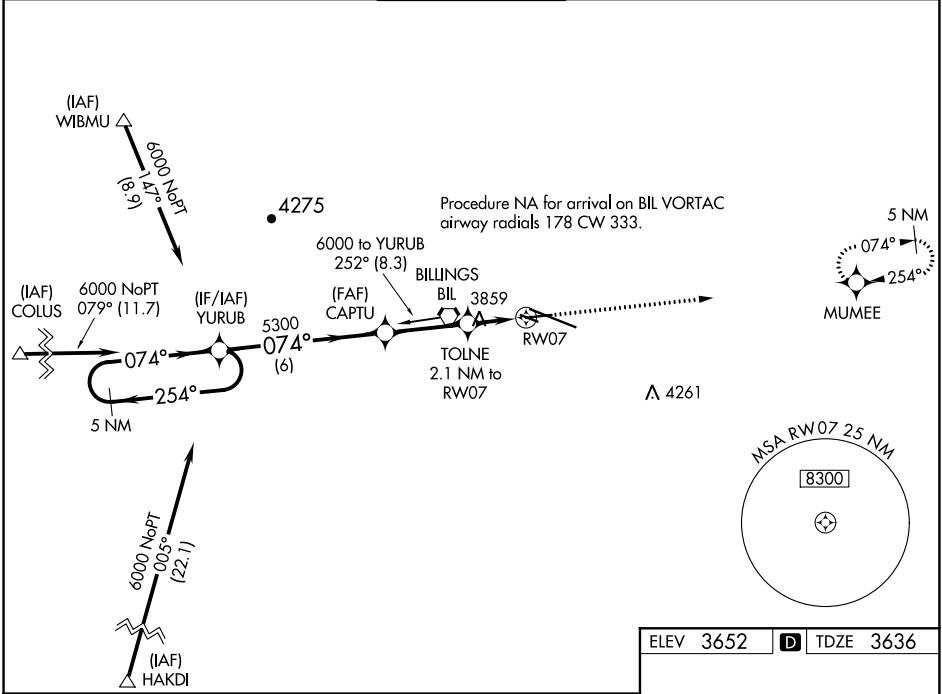
# RNAV (GPS) RWY 7

BILLINGS LOGAN INTL (BIL)

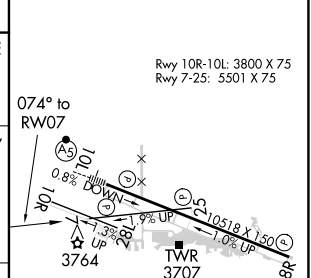
**⚠** For uncompensated Baro-VNAV systems, LNAV/VNAV NA below -25°C (-13°F) or above 53°C (127°F). Rwy 7 helicopter visibility reduction below 3/4 SM NA. DME/DME RNP-0.3 NA.

MISSED APPROACH: Climb to 6000 direct MUMEE and hold.

ATIS <b>126.3</b>	BILLINGS APP CON <b>120.5 284.6</b>	<b>BILLINGS TOWER</b> <b>127.2 257.8</b>	GND CON <b>121.9</b>	CINC DEL <b>121.9</b>
----------------------	--	---	-------------------------	--------------------------



ELEV 3652	<b>D</b> TDZE 3636
-----------	--------------------



CATEGORY	A	B	C	D
LPV DA		3886-3/4	250 (300-3/4)	
LNAV/VNAV DA		3950-1	314 (300-1)	
LNAV MDA	4120-1	484 (500-1)	4120-1 3/8	484 (500-1 3/8)
<b>C</b> CIRCLING	4120-1 468 (500-1)	4160-1 508 (600-1)	4180-1 1/2 528 (600-1 1/2)	4580-3 928 (1000-3)

NW-1, 08 OCT 2020 to 05 NOV 2020

NW-1, 08 OCT 2020 to 05 NOV 2020