

APP CRS	Rwy Idg	10518
282°	TDZE	3517
	Apt Elev	3652

RNAV (RNP) Z RWY 28R

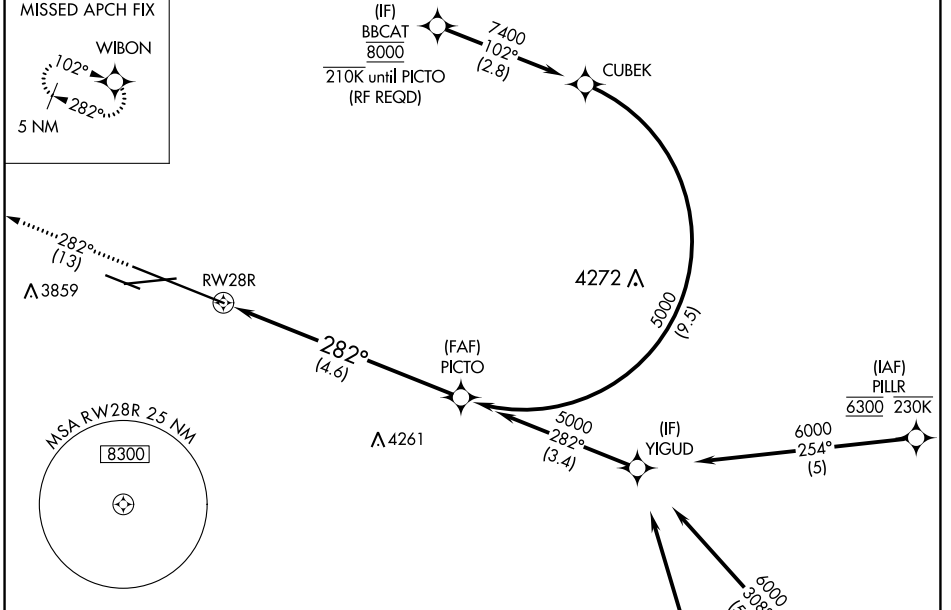
BILLINGS LOGAN INTL (BIL)

RNP AR APCH.

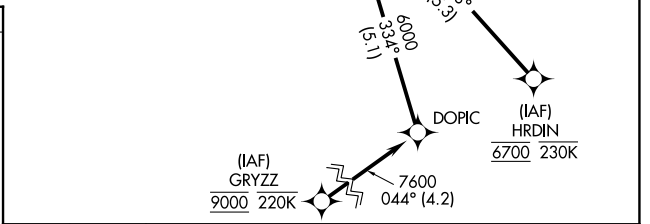
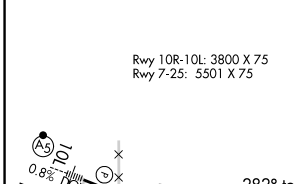
For uncompensated Baro-VNAV systems, procedure NA below -24°C (-11°F) or above 50°C (123°F). GPS required.

MISSED APPROACH: Climb to 5900 on track 282° to WIBON and hold.

ATIS 126.3	BILLINGS APP CON 120.5 284.6	BILLINGS TOWER 127.2 257.8	GND CON 121.9	CLNC DEL 121.9
----------------------	--	--------------------------------------	-------------------------	--------------------------



ELEV 3652	D	TDZE 3517
-----------	----------	-----------



5900	WIBON	5000	PICTO
RWY28R		5000	
tr 282°		GP 3.00° TCH 56	
4.6 NM			

CATEGORY	A	B	C	D
RNP 0.30 DA	3903-1¼		386 (300-1¼)	
AUTHORIZATION REQUIRED				

NW-1, 08 OCT 2020 to 05 NOV 2020

NW-1, 08 OCT 2020 to 05 NOV 2020