

WAAS CH 56222 W28A	APP CRS 282°	Rwy Idg 10518 TDZE 3517 Apt Elev 3652
---------------------------------	------------------------	--

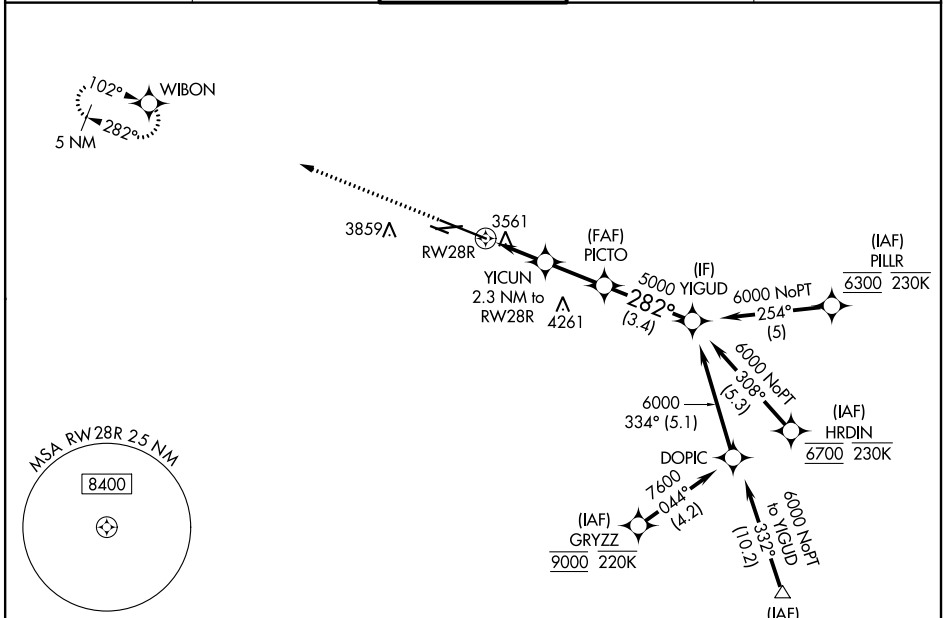
RNAV (GPS) Y RWY 28R

BILLINGS LOGAN INTL (BIL)

⚠ For uncompensated Baro-VNAV systems, LNAV/VNAV NA below -24°C (-11°F) or above 50°C (123°F). Rwy 28R helicopter visibility reduction below 3/4 SM NA. DME/DME RNP-0.3 NA.

MISSED APPROACH: Climb to 5900 direct WIBON and hold.

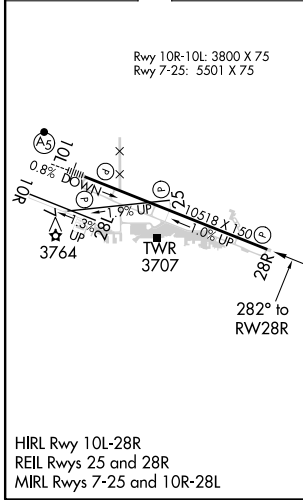
ATIS 126.3	BILLINGS APP CON 120.5 284.6	BILLINGS TOWER 127.2 257.8	GND CON 121.9	CLNC DEL 121.9
----------------------	--	--------------------------------------	-------------------------	--------------------------



NW-1, 08 OCT 2020 to 05 NOV 2020

NW-1, 08 OCT 2020 to 05 NOV 2020

ELEV 3652	D	TDZE 3517
------------------	----------	------------------



HIRL Rwy 10L-28R
REIL Rwy 25 and 28R
MIRL Rwy 7-25 and 10R-28L

<p>⚠ 5155</p> <p>5900 WIBON</p> <p>*LNAV only.</p> <p>YICUN 2.3 NM to RW28R</p> <p>PICTO 5000</p> <p>YIGUD 6000</p> <p>GP 3.00° TCH 56</p>				
<p>0.9 NM 1.4 NM 2.3 NM 3.4 NM</p>				
CATEGORY	A	B	C	D
LPV DA		3767-3/4	250 (200-3/4)	
LNAV/VNAV DA		3786-7/8	269 (200-7/8)	
LNAV MDA		3820-1	303 (200-1)	
C CIRCLING	4100-1 448 (500-1)	4160-1 508 (600-1)	4180-1 1/2 528 (600-1 1/2)	4580-3 928 (1000-3)