

LOC/DME I-TTL 110.55 Chan 42 (Y)	APP CRS 360°	Rwy Idg TDZE 6015 224 Apt Elev 224
---	------------------------	--

ILS or LOC RWY 36

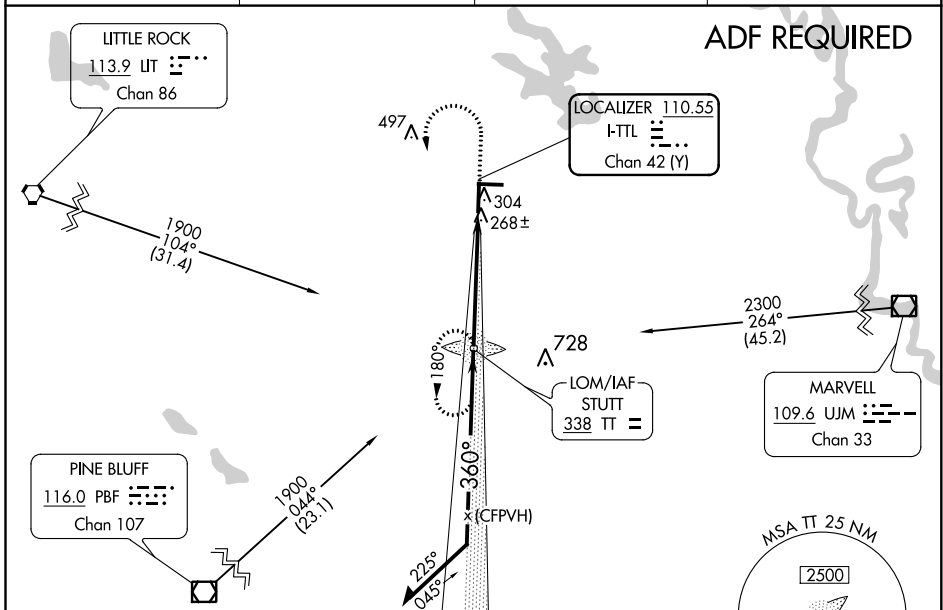
STUTTGART MUNI CARL HUMPHREY FIELD (SGT)

When local altimeter setting not received, use Bill and Hillary Clinton National/Adams Field altimeter setting and increase all DA/MDA 100 feet. VDP NA with Bill and Hillary Clinton National/Adams Field altimeter setting. For inop MALSF when using Bill and Hillary Clinton National/Adams Field altimeter setting, increase ILS all Cats visibility to 1 mile. Night landing Rwy's 9 and 27 NA.

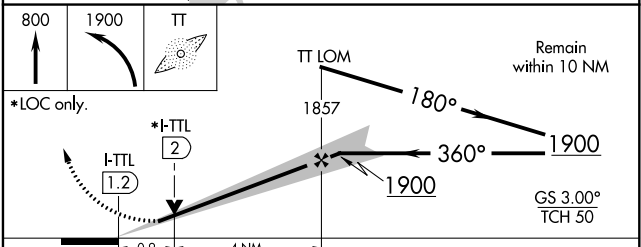
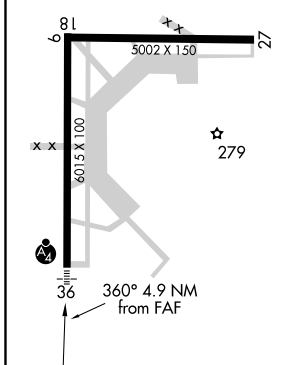


MISSED APPROACH:
Climb to 800, then climbing left turn to 1900 direct TT LOM and hold.

AWOS-3PT 119.025	LITTLE ROCK APP CON 135.4 353.6	CLNC DEL 123.7	UNICOM 122.8 (CTAF) 0
----------------------------	---	--------------------------	--



ELEV 224	TDZE 224
----------	----------



CATEGORY	A	B	C	D
S-ILS 36	424-3/4		200 (200-3/4)	
S-LOC 36	520-3/4		296 (300-3/4)	
CIRCLING	660-1 436 (500-1)	680-1 456 (500-1)	680-1 1/2 456 (500-1 1/2)	780-2 556 (600-2)

FAF to MAP 4.9 NM

Knots	60	90	120	150	180
Min:Sec	4:54	3:16	2:27	1:58	1:38

MIRL Rwy's 18-36 and 9-27 **0**
REIL Rwy's 18 and 27 **0**

SC-1, 08 OCT 2020 to 05 NOV 2020

SC-1, 08 OCT 2020 to 05 NOV 2020