

WAAS CH 58303 W18A	APP CRS 180°	Rwy Idg 6015 TDZE 224 Apt Elev 224
--	------------------------	---

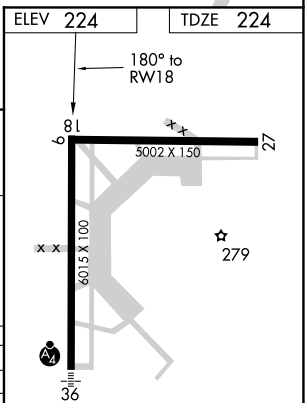
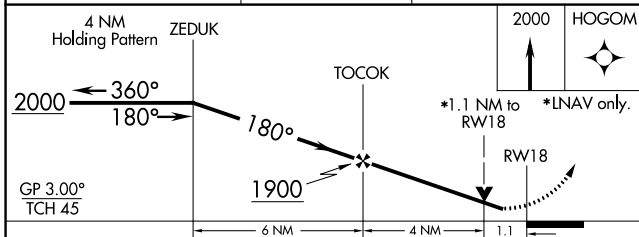
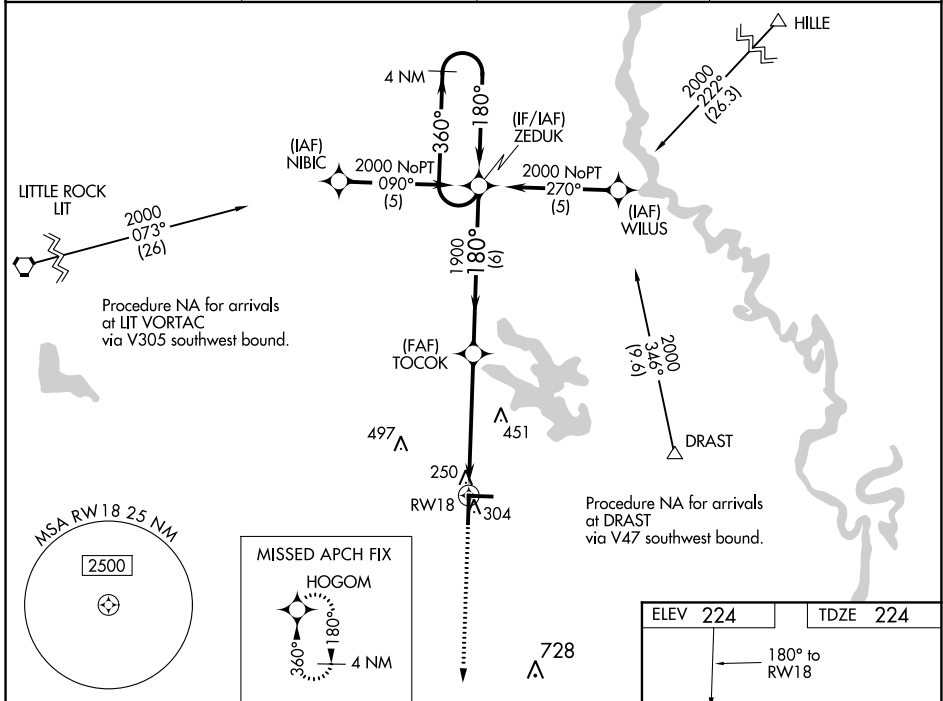
RNAV (GPS) RWY 18

STUTTART MUNI CARL HUMPHREY FIELD (SGT)

For uncompensated Baro-VNAV systems, LNAV/VNAV NA below -15°C (5°F) or above 48°C (118°F).
 DME/DME RNP-0.3 NA. When local altimeter setting not received, use Bill and Hillary Clinton National/
 Adams Field altimeter setting and increase all DAs 82 feet and all MDAs 100 feet. Baro-VNAV NA when
 using Bill and Hillary Clinton National/Adams Field altimeter setting. VDP NA when using Bill and Hillary
 Clinton National/Adams Field altimeter setting.

MISSED APPROACH:
 Climb to 2000 direct
 HOGOM and hold.

AWOS-3PT 119.025	LITTLE ROCK APP CON 135.4 353.6	CLNC DEL 123.7	UNICOM 122.8 (CTAF) 0
----------------------------	---	--------------------------	---------------------------------



CATEGORY	A	B	C	D
LPV DA	474-1 250 (300-1)			
LNAV/VNAV DA	520-¾	296 (300-¾)	520-1 296 (300-1)	
LNAV MDA	620-¾	396 (400-¾)	620-1½ 396 (400-1½)	
CIRCLING	660-1 436 (500-1)	680-1 456 (500-1)	680-1½ 456 (500-1½)	780-2 556 (600-2)

MIRL Rwy 18-36 and 9-27 0
 REIL Rwy 18 and 27 0

SC-1, 08 OCT 2020 to 05 NOV 2020

SC-1, 08 OCT 2020 to 05 NOV 2020