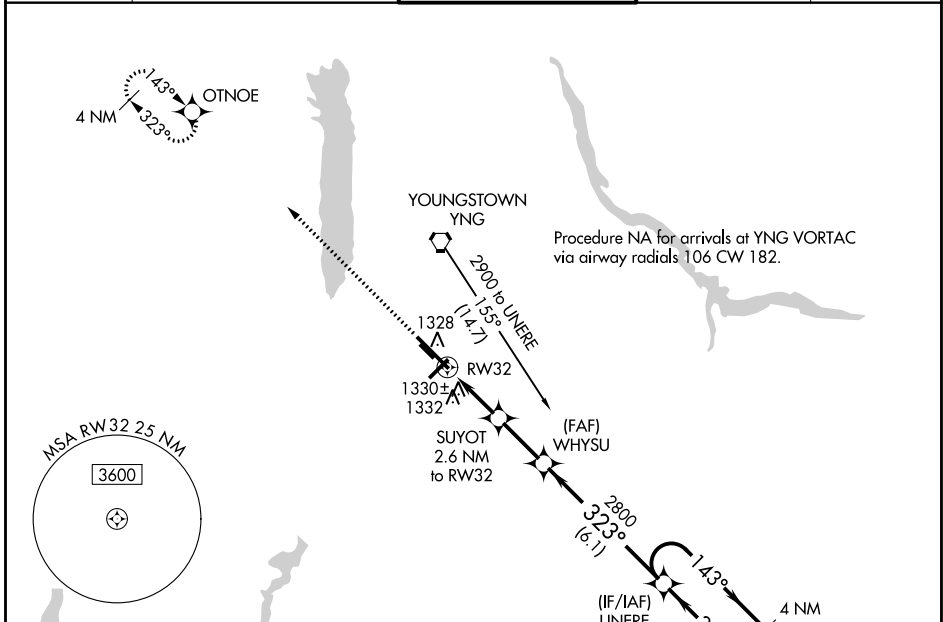


WAAS CH 97406 W32A	APP CRS 323°	Rwy Idg TDZE Apt Elev	9003 1186 1192
--	------------------------	-----------------------------	---

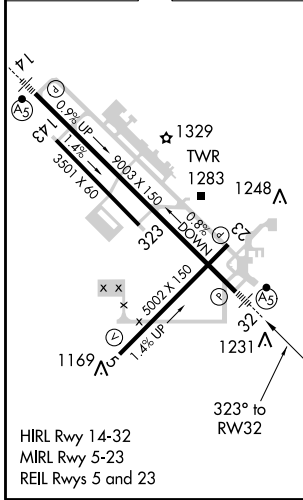
RNAV (GPS) RWY 32

YOUNGSTOWN-WARREN RGNL (YNG)

RNP APCH.		MALSR		MISSED APPROACH: Climb to 2900 direct OTNOE and hold.	
⚠ For uncompensated Baro-VNAV systems, LNAV/VNAV NA below -17°C or above 46°C. For inop ALS, increase LPV all Cats visibility to RVR 5000 and LNAV Cat D visibility to RVR 6000. Circling Rwy 5 NA at night.					
ATIS 123.75	YOUNGSTOWN APP CON * 133.95 322.3	YOUNGSTOWN TOWER 119.5 263.0	GND CON 121.9 275.8	CLNC DEL 118.25	



ELEV 1192	D	TDZE 1186
-----------	----------	-----------



2900 OTNOE *LNAV only SUYOT 2.6 NM to RW32 WHYSU 2800 UNERE 4 NM Holding Pattern	
RW32 1.1 NM to RW32 *2040 2800 GP 3.00° TCH 35	
1.1 1.5 2.3 NM 6.1 NM	
CATEGORY	A B C D
LPV DA	1458/24 272 (300-½)
LNAV/VNAV DA	1639/60 453 (500-1½)
LNAV MDA	1580/24 394 (400-½) 1580/50 394 (400-1)
C CIRCLING	1640-1 448 (500-1) 1660-1 468 (500-1) 1740-1½ 548 (600-1½) 1760-2 568 (600-2)

EC-2, 08 OCT 2020 to 05 NOV 2020

EC-2, 08 OCT 2020 to 05 NOV 2020