

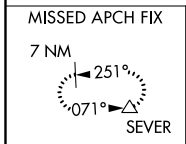
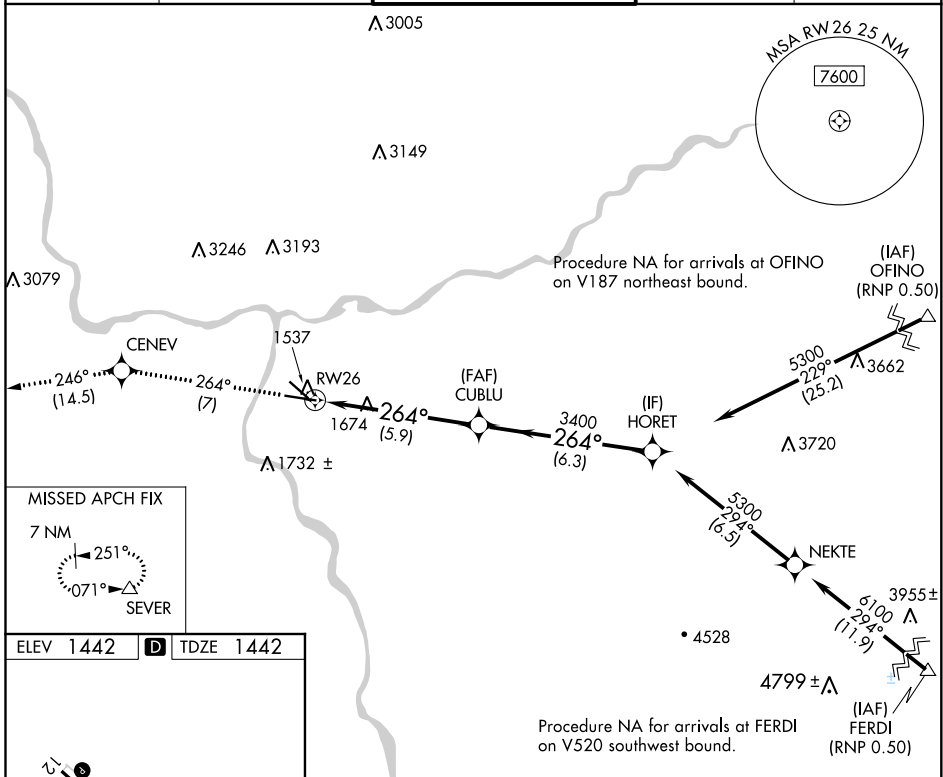
APP CRS 264°	Rwy Idg 6511
	TDZE 1442
	Apt Elev 1442

RNAV (RNP) Z RWY 26

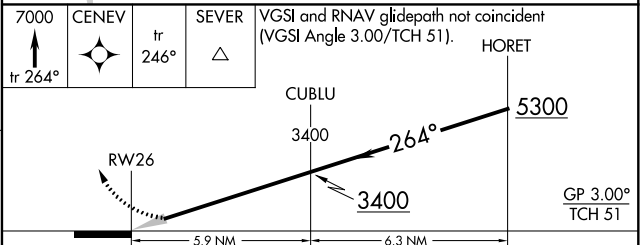
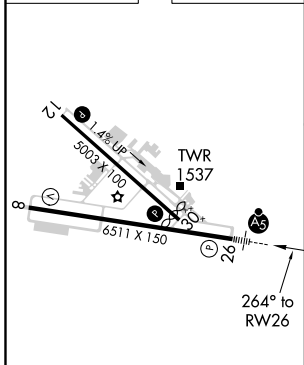
LEWISTON-NEZ PERCE COUNTY (LWS)

<p>▽ For uncompensated Baro-VNAV systems, procedure NA below -16°C (3°F) or above 46°C (115°F). GPS required. For inoperative MALS, increase RNP 0.30 visibility all Cats to 1 7/8 miles.</p>	<p>MALS</p>	<p>MISSED APPROACH: Climb to 7000 on track 264° to CENEV and on track 246° to SEVER and hold, continue climb-in-hold to 7000.</p>
--	--------------------	--

ASOS 135.575	SEATTLE CENTER 123.95 290.55	LEWISTON TOWER ★ 119.4 (CTAF) 318.8	GND CON 121.9	UNICOM 122.95
------------------------	--	---	-------------------------	-------------------------



ELEV 1442	D	TDZE 1442
-----------	----------	-----------



CATEGORY	A	B	C	D
RNP 0.20 DA		1806-3/4	364 (400-3/4)	
RNP 0.30 DA		2003-1 1/2	561 (600-1 1/2)	

AUTHORIZATION REQUIRED

NW-1, 08 OCT 2020 to 05 NOV 2020

NW-1, 08 OCT 2020 to 05 NOV 2020