

# RNAV (RNP) Z RWY 8

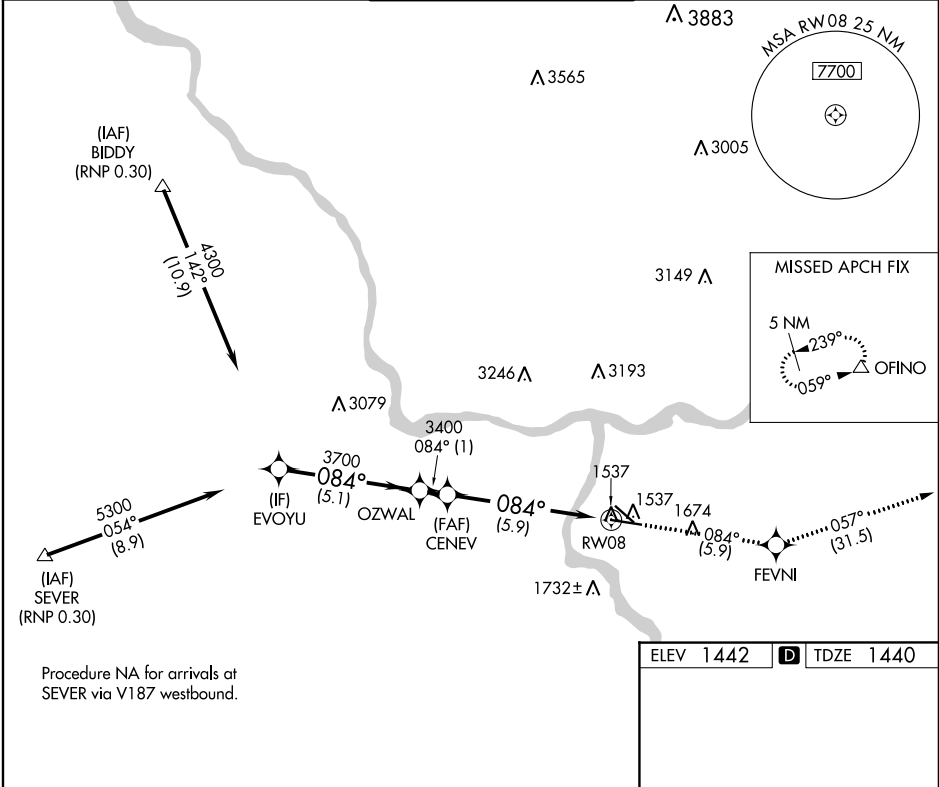
LEWISTON-NEZ PERCE COUNTY (LWS)

APP CRS	Rwy Idg	<b>6511</b>
<b>084°</b>	TDZE	<b>1440</b>
	Apt Elev	<b>1442</b>

**GPS required.** For uncompensated Baro-VNAV systems, procedure NA below -16°C (3°F) or above 46°C (115°F). When VGSI inop, procedure NA at night.

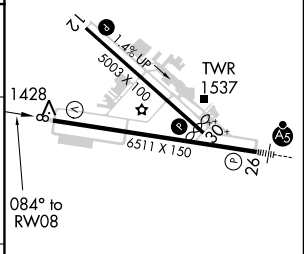
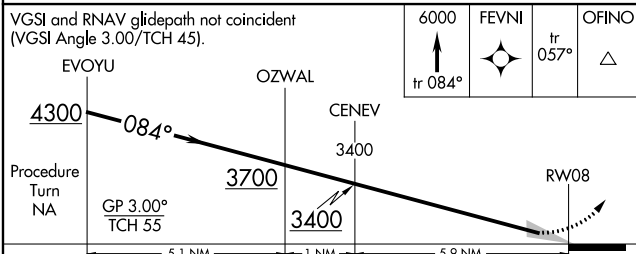
**MISSED APPROACH:** Climb to 6000 via track 084° to FEVNI and via track 057° to OFINO and hold.

ASOS <b>135.575</b>	SEATTLE CENTER <b>123.95 290.55</b>	LEWISTON TOWER ★ <b>119.4 (CTAF) 0 318.8</b>	GND CON <b>121.9</b>	UNICOM <b>122.95</b>
------------------------	--	---	-------------------------	-------------------------



NW-1, 08 OCT 2020 to 05 NOV 2020

NW-1, 08 OCT 2020 to 05 NOV 2020



CATEGORY	A	B	C	D
RNP 0.30 DA	1752-1 312 (400-1)			

## AUTHORIZATION REQUIRED

REIL Rwy 8 and 120  
HIRL Rwy 8-26  
MIRL Rwy 12-30