

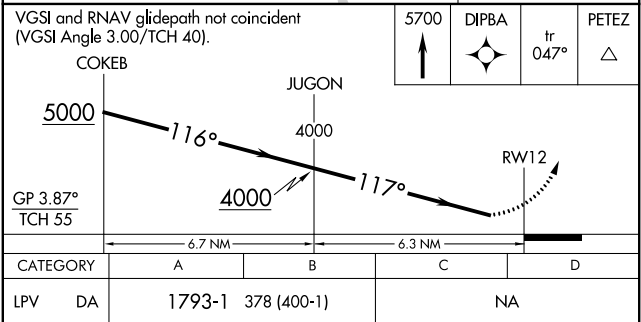
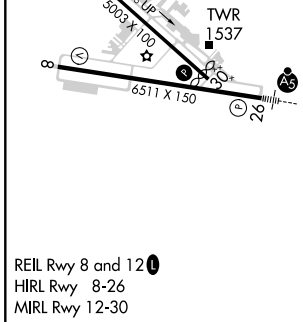
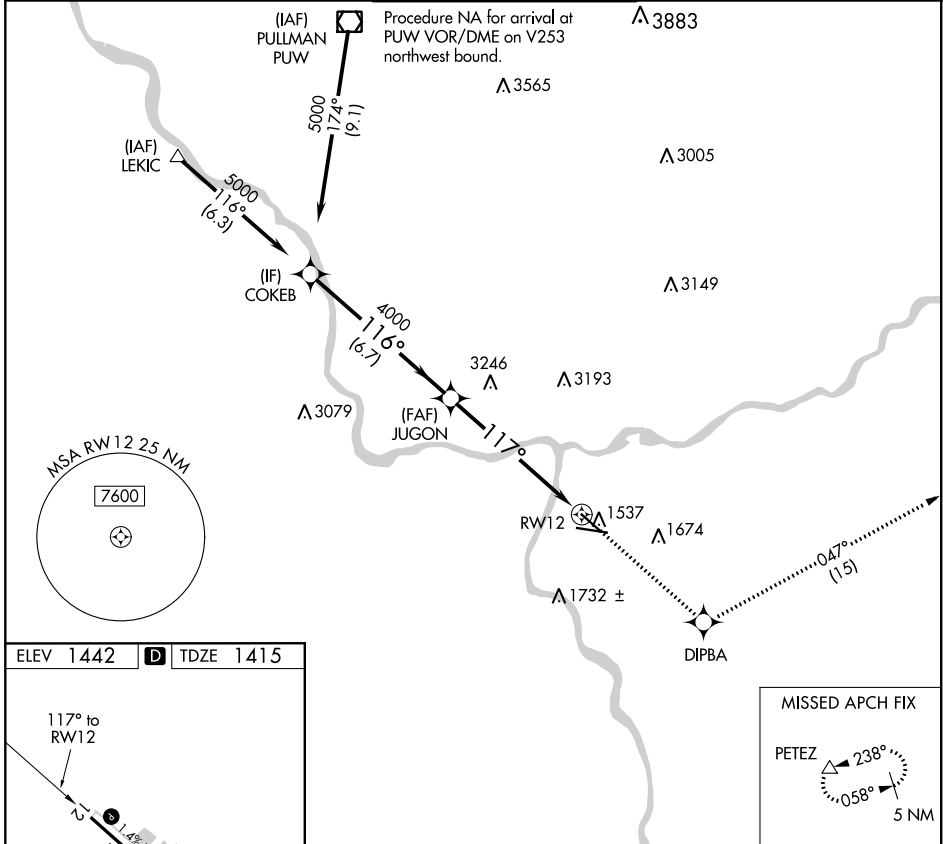
WAAS CH 56500 W12A	APP CRS 117°	Rwy Idg 4750 TDZE 1415 Apt Elev 1442
--	------------------------	---

RNAV (GPS) Y RWY 12

LEWISTON-NEZ PERCE COUNTY (LWS)

<p>⚠ NA</p> <p>When local altimeter setting not received, procedure NA. DME/DME RNP-0.3 NA. Helicopter visibility reduction below ¾ SM NA.</p>	<p>MISSED APPROACH: Climb to 5700 direct DIPBA and on track 047° to PETEZ and hold, continue climb-in-hold to 5700.</p>
---	--

ASOS 135.575	SEATTLE CENTER 123.95 290.55	LEWISTON TOWER ★ 119.4 (CTAF) 0 318.8	GND CON 121.9	UNICOM 122.95
------------------------	--	---	-------------------------	-------------------------



NW-1, 08 OCT 2020 to 05 NOV 2020

NW-1, 08 OCT 2020 to 05 NOV 2020