

WAAS CH <b>97600</b> <b>W08A</b>	APP CRS <b>084°</b>	Rwy Idg TDZE <b>1440</b> Apt Elev <b>1442</b>	<b>6511</b>
--	------------------------	---	-------------

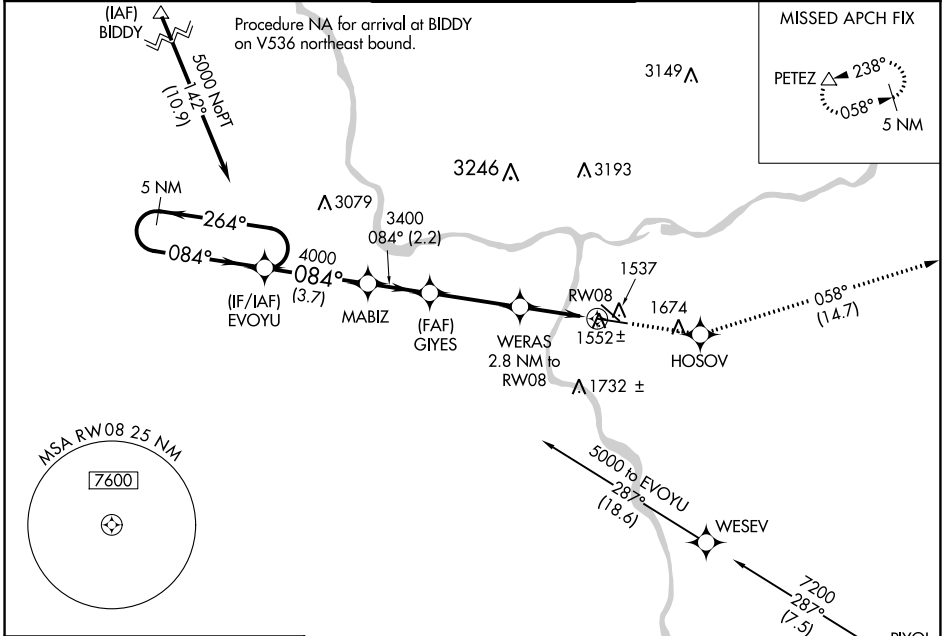
# RNAV (GPS) Y RWY 8

LEWISTON-NEZ PERCE COUNTY (LWS)

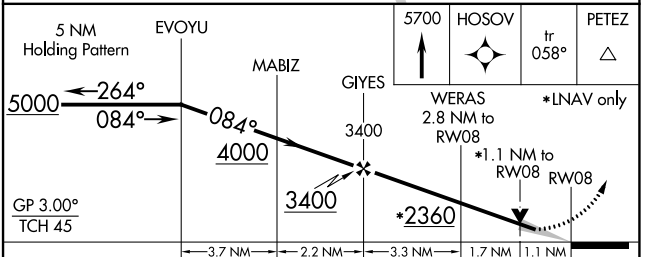
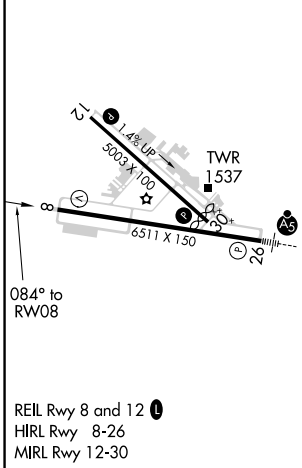
**⚠** For uncompensated Baro-VNAV systems, LNAV/VNAV NA below -1.4°C (7°F) or above 34°C (93°F). DME/DME RNP-0.3 NA.

**MISSED APPROACH:** Climb to 5700 direct HOSOVO and on track 058° to PETEZ and hold, continue climb-in-hold to 5700.

ASOS <b>135.575</b>	SEATTLE CENTER <b>123.95 290.55</b>	LEWISTON TOWER ★ <b>119.4 (CTAF) 0 318.8</b>	GND CON <b>121.9</b>	UNICOM <b>122.95</b>
------------------------	--	---	-------------------------	-------------------------



ELEV <b>1442</b>	<b>D</b>	TDZE <b>1440</b>
------------------	----------	------------------



CATEGORY	A	B	C	D
LPV DA		1690- $\frac{3}{4}$	250 (300- $\frac{3}{4}$ )	
LNAV/VNAV DA		1736-1	296 (300-1)	
LNAV MDA	1820-1	380 (400-1)	1820-1 $\frac{1}{8}$	380 (400-1 $\frac{1}{8}$ )
CIRCLING	2000-1	558 (600-1)	2000-1 $\frac{1}{2}$ 558 (600-1 $\frac{1}{2}$ )	2160-2 $\frac{1}{4}$ 718 (800-2 $\frac{1}{4}$ )

NW-1, 08 OCT 2020 to 05 NOV 2020

NW-1, 08 OCT 2020 to 05 NOV 2020