

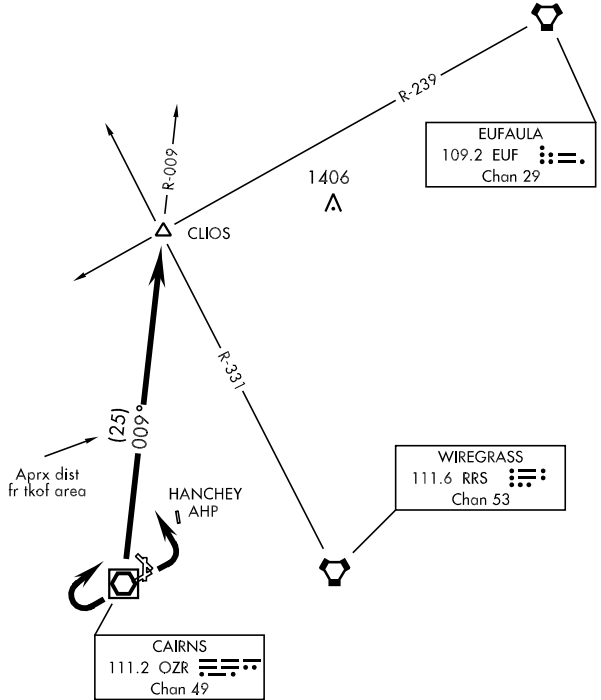
CLIOS-TWO DEPARTURE (CLIOS2•CLIOS)

CAIRNS AAF (KOZR)
FORT RUCKER, ALABAMA

ATIS 111.2 316.15
CLNC DEL
118.075 380.1
GND CON
121.9 288.25
CAIRNS TOWER ★
135.2 (CTAF) 248.55
DEP CON
121.1 319.25
JACKSONVILLE CENTER
120.2 346.4

SL-577 [USA]

RADAR REQUIRED



SE-4, 08 OCT 2020 to 05 NOV 2020

SE-4, 08 OCT 2020 to 05 NOV 2020

DEPARTURE ROUTE DESCRIPTION

TAKE-OFF RWY 6 or RWY 18: Climbing left turn heading 330°

TAKE-OFF RWY 24: Climbing right turn heading 050°

TAKE-OFF RWY 36: Climb on heading 350°

TAKE-OFF PAD D1: Climb on heading 350°

TAKE-OFF PAD D2: Climb on heading 350°

Maintain 2000, expect clearance to requested altitude/flight level ten (10) minutes after departure.

.... Intercept OZR VOR/DME R-009 to CLIOS INT.

CLIOS-TWO DEPARTURE (CLIOS2•CLIOS)

FORT RUCKER, ALABAMA
CAIRNS AAF (KOZR)