

# NDB RWY 6

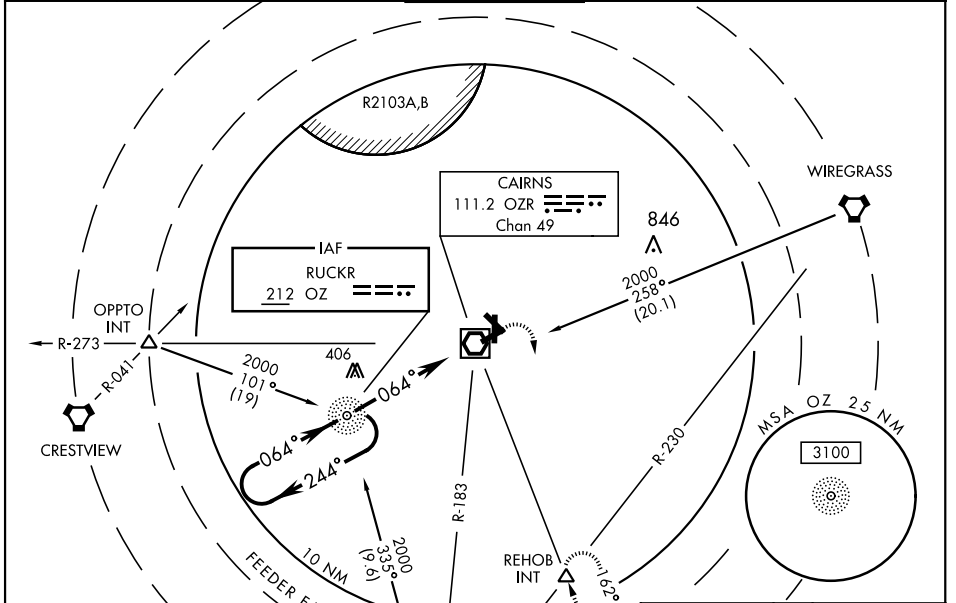
NDB OZ <b>212</b>	APCH CRS <b>064°</b>	Rwy Idg TDZE <b>298</b> Arprt Elev <b>301</b>	AL-577 [USA]	CAIRNS AAF (KOZR)
----------------------	-------------------------	---	--------------	-------------------

**▼\*** When ALS inop, increase CAT AB RVR to 50, vis to 1 mile; CAT CD RVR to 60, vis to 1¼ miles.  
 Visibility reduction by helicopters NA.

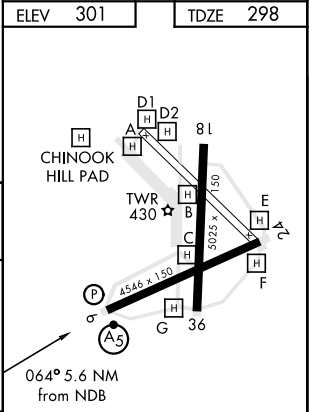
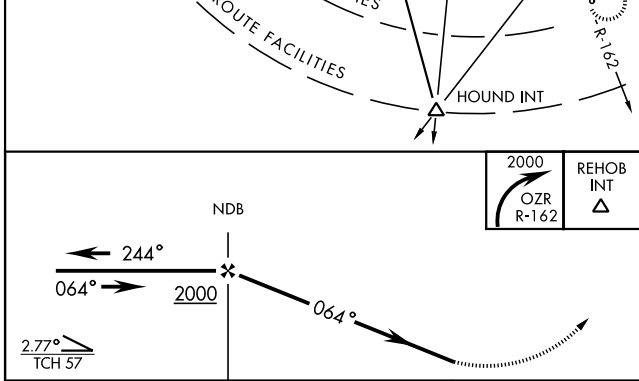
**MALSR**

**MISSED APPROACH:** Climbing right turn to 2000 via OZR VOR/DME R-162 to REHOB INT and hold; or when directed by ATC, climbing left turn to 2000 heading 290° within 10 NM (RADAR required).

ATIS <b>111.2</b> <b>316.15</b>	CAIRNS APP CON 021°-120° <b>125.4</b> <b>327.125</b> 121°-219° <b>133.75</b> <b>270.35</b> 220°-340° <b>133.45</b> <b>239.275</b> 341°-020° <b>121.1</b> <b>319.25</b>	CAIRNS TOWER ★ <b>135.2</b> (CTAF) <b>248.55</b>	GND CON <b>121.9</b> <b>288.25</b>	CLNC DEL <b>118.075</b> <b>380.1</b>	PAR
---------------------------------------	--	--	--	--	-----



ELEV 301	TDZE 298
----------	----------



CATEGORY	A	B	C	D	
S-6 *	720/40 422 (500-¾)				
CIRCLING	780/40 479 (500-¾)	860-1½ 559 (600-1½)	900-2 599 (600-2)		
FAF to MAP 5.6 NM					
Knots	60	90	120	150	180
Min:Sec	5:36	3:44	2:48	2:14	1:52

FORT RUCKER, ALABAMA 31° 16' N-85° 43' W CAIRNS AAF (KOZR)

# NDB RWY 6

SE-4, 08 OCT 2020 to 05 NOV 2020

SE-4, 08 OCT 2020 to 05 NOV 2020