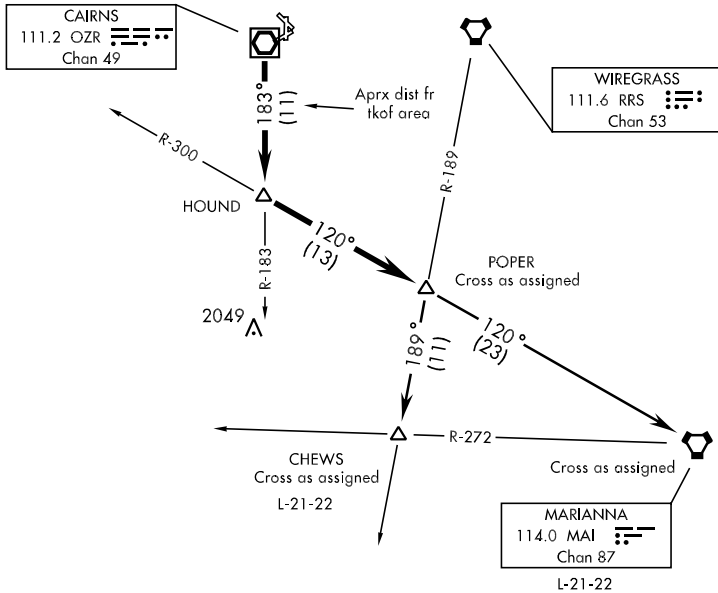


# POPER-ONE DEPARTURE (POPER1•POPER)

SL-577 [USA]

ATIS 111.2 316.15  
 CLNC DEL  
 118.075 380.1  
 GND CON  
 121.9 288.25  
 CAIRNS TOWER ★  
 135.2 (CTAF) 248.55  
 DEP CON  
 133.75 270.35  
 JACKSONVILLE CENTER  
 120.2 346.4



SE-4, 08 OCT 2020 to 05 NOV 2020

SE-4, 08 OCT 2020 to 05 NOV 2020

## DEPARTURE ROUTE DESCRIPTION

TAKE-OFF RWY 6, 18 or 36: Climbing right turn heading 205° ....

TAKE-OFF RWY 24: Climbing left turn heading 120° ....

TAKE-OFF PAD C OR G: Climb heading 178° to 1000, then right turn heading 205° ....  
 .... to intercept OZR VOR/DME R-183 to HOUND INT, and via MAI VORTAC R-300 to POPER INT. Thence via assigned Transition. Maintain 2000, expect clearance to requested altitude/flight level ten (10) minutes after departure.

CHEWS TRANSITION: (POPER 1•CHEWS) Proceed via RRS VORTAC R-189 to CHEWS INT.

MARIANNA TRANSITION: (POPER 1•MAI) Proceed via MAI R-300 to MAI VORTAC.