

FORT RUCKER, ALABAMA

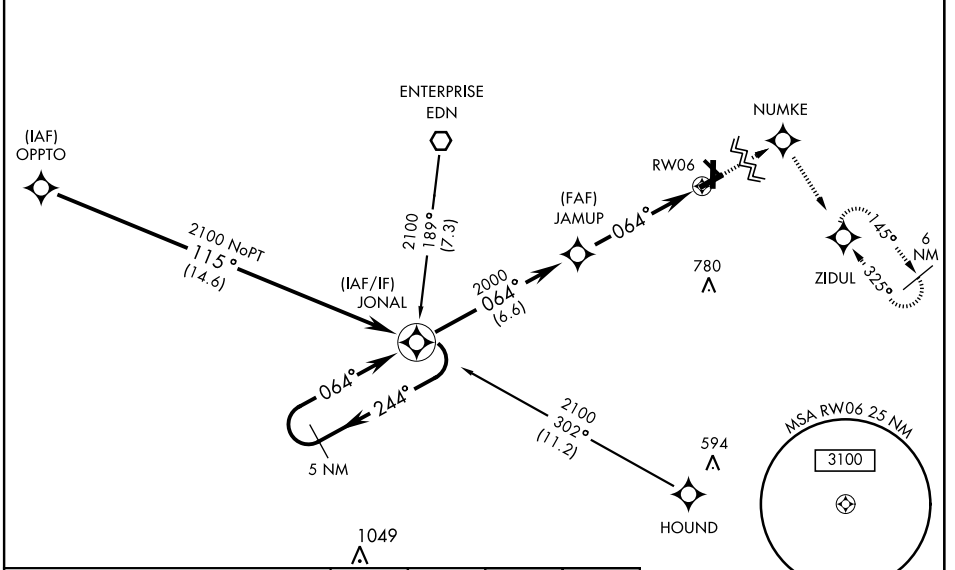
RNAV (GPS) RWY 6

WAAS CH 50537 W06A	APCH CRS 064°	Rwy Idg TDZE Arprt Elev 4546 298 301	AL-577 [USA]	CAIRNS AAF (KOZR)
--	-------------------------	--	--------------	-------------------

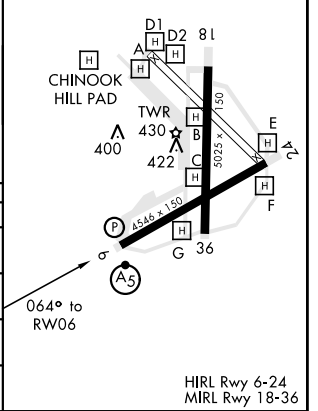
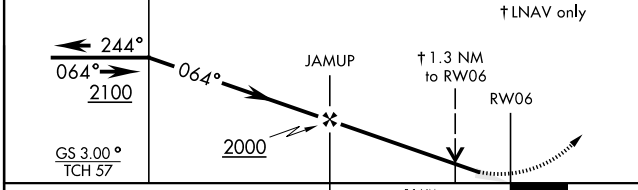
DME/DME RNP-0.3 NA	MALSRL 	MISSED APPROACH: Climb to 2000 direct NUMKE then climbing right turn on track 148° to ZIDUL and hold.
<p>▼ * When ALS inop, increase LNAV/VNAV visibility to RVR 40, increase LNAV CAT AB visibility to RVR 55 and CAT CD vis to 1 3/8 miles.</p>		

CAIRNS APP CON	CAIRNS TOWER ★	GND CON	CLNC DEL	PAR	
ATIS 111.2 316.15	021°-120° 125.4 327.125 121°-219° 133.75 270.35 220°-340° 133.45 239.275 341°-020° 121.1 319.25	135.2 (CTAF) 248.55	121.9 288.25	118.075 380.1	

For uncompensated BARO-VNAV systems, LNAV/VNAV NA below -5°C (23°F) or above 54°C (130°F).



ELEV 301	TDZE 298
----------	----------



CATEGORY	A	B	C	D
LPV DA	498/24		200	(200-1/2)
LNAV/VNAV DA*	560/24		262	(300-1/2)
LNAV MDA*	760/24 462 (500-1/2)		760/50 462 (500-1)	
CIRCLING	760-1	780-1	860-1 1/2	900-2
	459 (500-1)	479 (500-1)	559 (600-1 1/2)	599 (600-2)

FORT RUCKER, ALABAMA 31° 16'N-85° 43'W CAIRNS AAF (KOZR)

Amdt 1 25JUN15

RNAV (GPS) RWY 6

SE-4, 08 OCT 2020 to 05 NOV 2020

SE-4, 08 OCT 2020 to 05 NOV 2020