

# VOR RWY 24

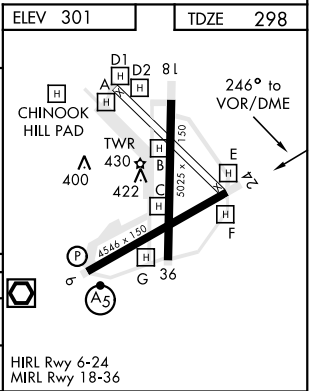
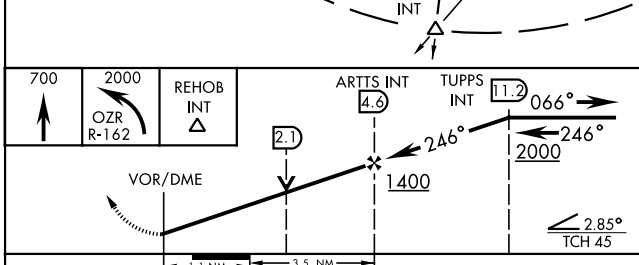
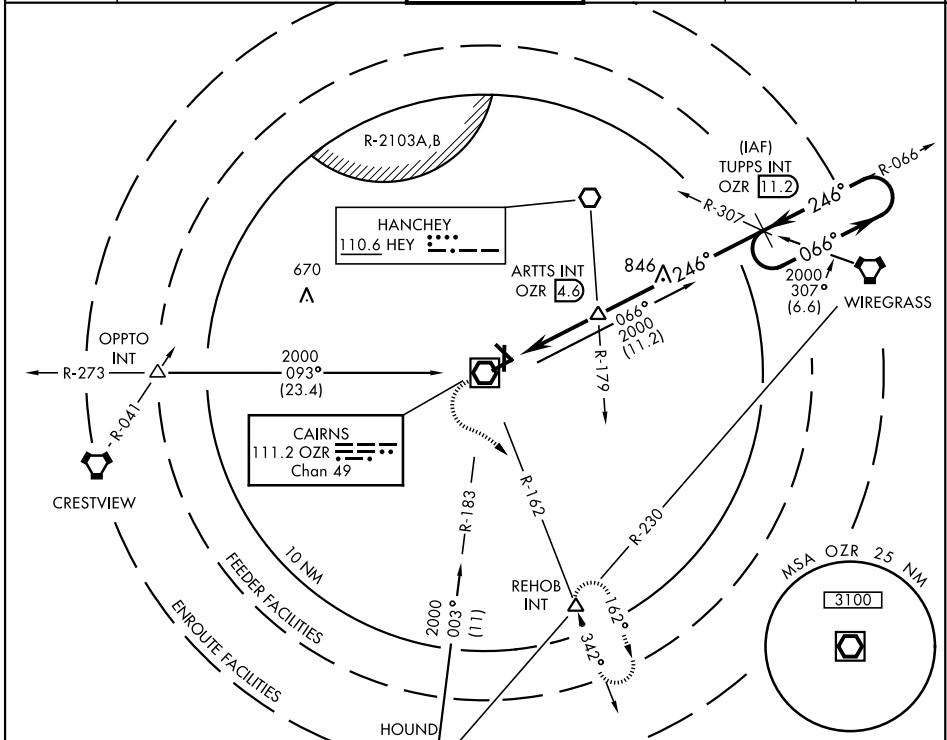
VOR/DME OZR <b>111.2</b> Chan <b>49</b>	APCH CRS <b>246°</b>	Rwy Idg TDZE <b>4546</b> <b>298</b> Arprt Elev <b>301</b>
---	-------------------------	--

AL-577 [USA]

CAIRNS AAF (KOZR)

**MISSED APPROACH:** Climb to 700 then climbing left turn to 2000 via OZR  
 VOR/DME R-162 to REHOB INT and hold; or when directed by ATC, climb to 700 then climbing right turn heading 290° to 2000 within 10 NM (RADAR required).

ATIS <b>111.2</b> <b>316.15</b>	CAIRNS APP CON 021°-120° <b>125.4</b> <b>327.125</b> 121°-219° <b>133.75</b> <b>270.35</b> 220°-340° <b>133.45</b> <b>239.275</b> 341°-020° <b>121.1</b> <b>319.25</b>	CAIRNS TOWER ★ <b>135.2</b> (CTAF) <b>248.55</b>	GND CON <b>121.9</b> <b>288.25</b>	CLNC DEL <b>118.075</b> <b>380.1</b>	PAR
---------------------------------------	--	--	--	--	-----



CATEGORY	A	B	C	D
S-24	680-1	382	(400-1)	680-1¼ 382 (400-1¼)
CIRCLING	780-1 479	(500-1)	860-1½ 559 (600-1½)	900-2 599 (600-2)

# VOR RWY 24

SE-4, 08 OCT 2020 to 05 NOV 2020

SE-4, 08 OCT 2020 to 05 NOV 2020