

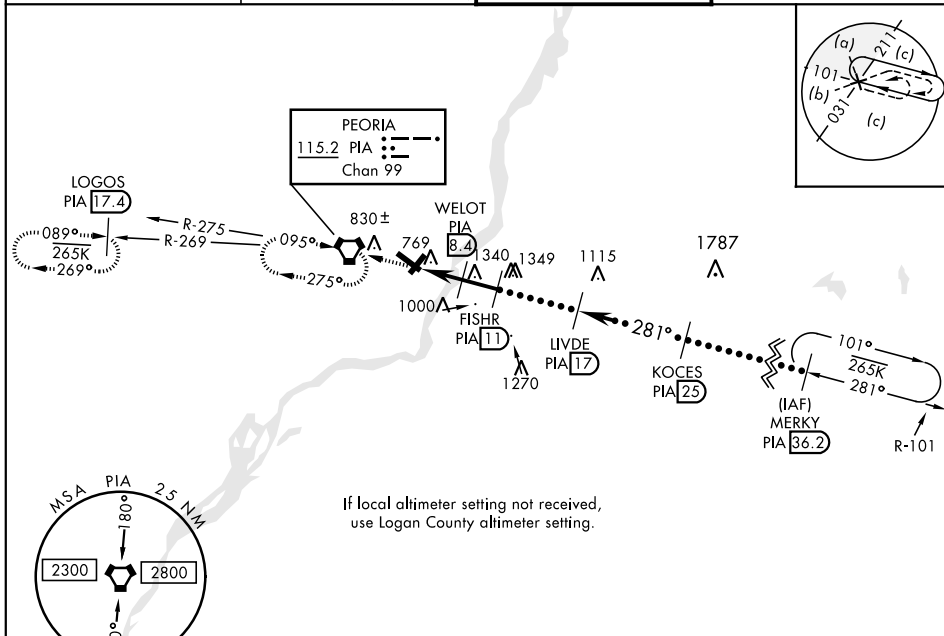
PEORIA, ILLINOIS

HI-VOR/DME or TACAN RWY 31

VORTAC PIA 115.2 Chan 99	APCH CRS 281°	Rwy ldg 10,104 TDZE 651 Arpt Elev 661	JAL 597 [USAF] GENERAL DOWNING - PEORIA INTL (KPIA)
--	-------------------------	--	---

MISSED APPROACH: Climb to 2800, direct PIA VORTAC and hold. Continue climb-in-hold to 2800. (TACAN aircraft: continue via PIA R-269 to LOGOS INT/PIA 17.4 DME and hold West, right turn 089° inbound).

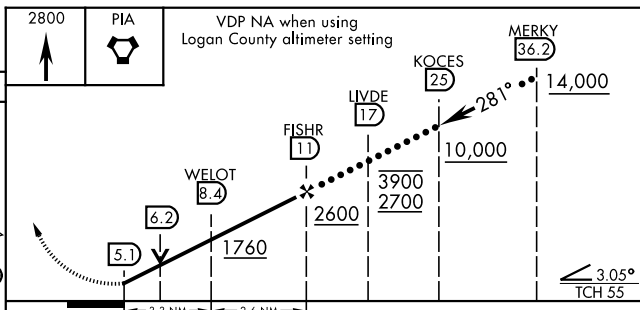
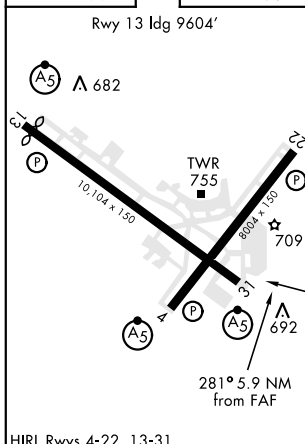
ATIS 126.1 282.2	PEORIA APP CON 125.8 269.2 (305°-125°) 124.675 317.55 (126°-304°)	PEORIA TOWER 124.0 353.85	GND CON 121.85 348.6
----------------------------	---	-------------------------------------	--------------------------------



If local altimeter setting not received, use Logan County altimeter setting.

EMERG SAFE ALT 100 NM 3300

ELEV 661	TDZE 651
----------	----------



CATEGORY	C	D	E
S-31	1040/50 389 (400-1)	1040/60 389	(400-1¼)
CIRCLING	1160-1½ 499 (500-1½)	1220-2 559 (600-2)	1680-3 1019 (1100-3)
LOGAN COUNTY ALTIMETER MINIMA			
S-31	1140/50 489 (500-1)	1140/60 489	(500-1¼)
CIRCLING	1260-1½ 599 (600-1½)	1320-2 659 (700-2)	1780-3 1119 (1200-3)

PEORIA, ILLINOIS

40°40'N-89°42'W

GENERAL DOWNING - PEORIA INTL (KPIA)

Amtd 1A 30APR15

HI-VOR/DME or TACAN RWY 31

EC-3, 08 OCT 2020 to 05 NOV 2020

EC-3, 08 OCT 2020 to 05 NOV 2020