

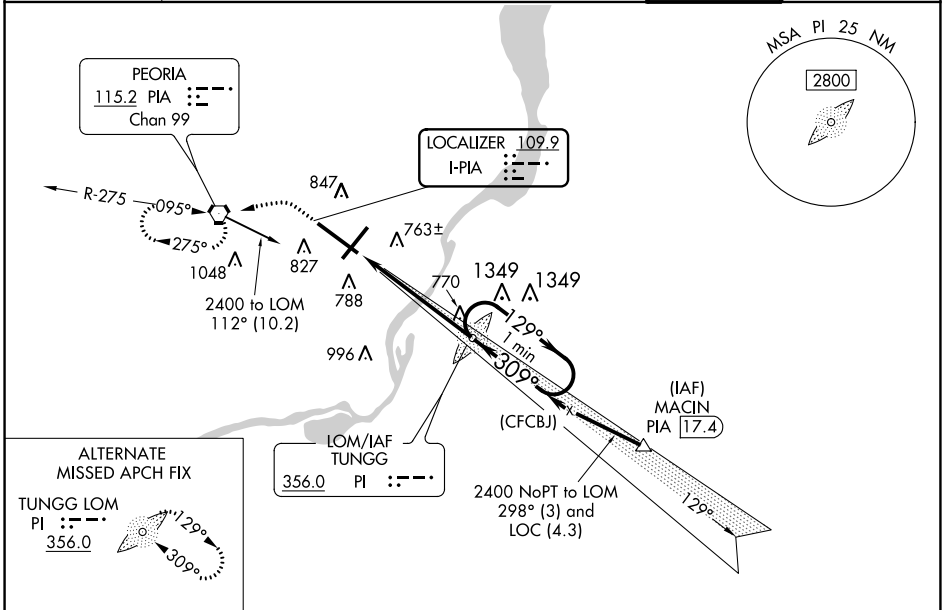
LOC I-PIA 109.9	APP CRS 309°	Rwy ldg 10104 TDZE 650 Apt Elev 661
---------------------------	------------------------	--

ILS or LOC RWY 31
GENERAL DOWNING-PEORIA INTL (PIA)

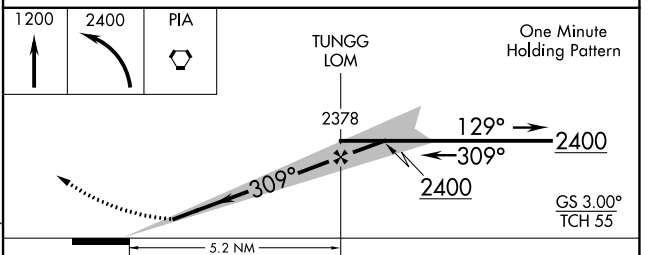
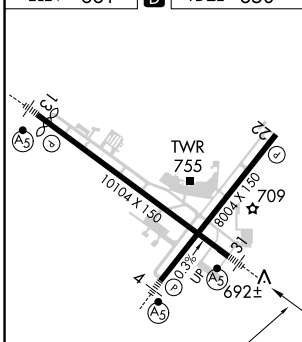
⚠ When local altimeter setting not received, use Logan County altimeter setting and increase all DA 89 feet and all MDA 100 feet, increase S-LOC Cat C and D visibility ¼ mile, and Circling Cat C ¼ mile and Cat D ½ mile. Circling Rwy 13, 31 NA at night.
* RVR 1800 authorized with the use of FD or AP or HUD to DA.

MALSR
(AS)
MISSED APPROACH: Climb to 1200 then climbing left turn to 2400 direct PIA VORTAC and hold.

ATIS 126.1 282.2	PEORIA APP CON 125.8 269.2 (305°-125°) 124.675 317.55 (126°-304°)	PEORIA TOWER 124.0 353.85	GND CON 121.85 348.6
----------------------------	--	-------------------------------------	--------------------------------



ELEV 661	D	TDZE 650
-----------------	----------	-----------------



CATEGORY	A	B	C	D
S-ILS 31 *	850/24 200 (200-½)			
S-LOC 31	1200/24	550 (600-½)	1200/60	550 (600-1¼)
C CIRCLING	1200-1	539 (600-1)	1200-1½ 539 (600-1½)	1400-2¼ 739 (800-2¼)

PEORIA, ILLINOIS
Amdt 7D 26MAR20

40°40'N-89°42'W

GENERAL DOWNING-PEORIA INTL (PIA)
ILS or LOC RWY 31

EC-3, 08 OCT 2020 to 05 NOV 2020

EC-3, 08 OCT 2020 to 05 NOV 2020