


WAAS CH <b>77509</b> <b>W31A</b>	APP CRS <b>309°</b>	Rwy Idg <b>10104</b> TDZE <b>650</b> Apt Elev <b>661</b>
--	------------------------	--

# RNAV (GPS) RWY 31

GENERAL DOWNING-PEORIA INTL (PIA)

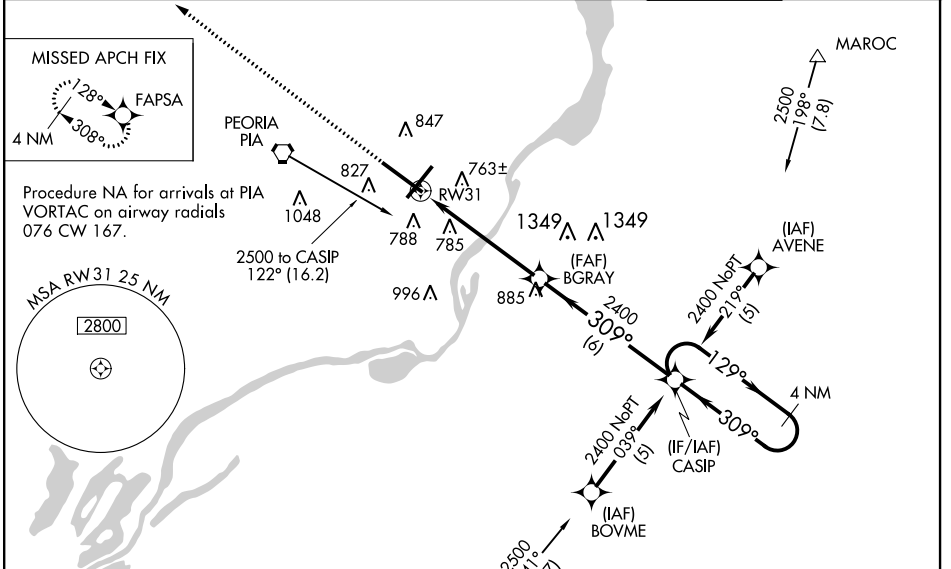
RNP APCH.

For uncompensated Baro-VNAV systems, LNAV/VNAV NA below -19°C or above 54°C.  
 For inoperative MALS, increase LPV all Cats visibility to 4500. When local altimeter setting not received, use Logan County altimeter setting and increase all DA 89 feet and all MDA 100 feet, increase LPV DA all Cats visibility to RVR 3500, LNAV/VNAV DA all Cats visibility to 1 1/4 mile, LNAV MDA Cat C and D visibility to RVR 5000, and Circling Cat C 1/4 mile and Cat D 1/2 mile. Baro-VNAV and VDP NA when using Logan County altimeter setting. Circling Rwy 13, 31 NA at night.

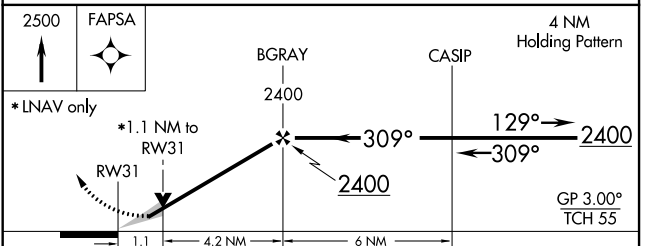
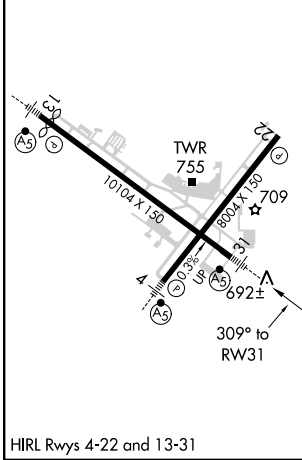
MALS 

MISSED APPROACH:  
Climb to 2500 direct FAPSA and hold.

ATIS <b>126.1 282.2</b>	PEORIA APP CON (305°-125°) <b>125.8 269.2</b>	PEORIA TOWER <b>124.0 353.85</b>	GND CON <b>121.85 348.6</b>
----------------------------	--	-------------------------------------	--------------------------------



ELEV 661	<b>D</b>	TDZE 650
----------	----------	----------



CATEGORY	A	B	C	D
LPV DA	939/24		289 (300-1/2)	
LNAV/VNAV DA	1122/60		472 (500-1 1/4)	
LNAV MDA	1040/24	390 (400-1/2)	1040/35	390 (400-5/8)
<b>C</b> CIRCLING	1160-1	499 (500-1)	1180-1 1/2 519 (600-1 1/2)	1400-2 1/4 739 (800-2 1/4)

EC-3, 08 OCT 2020 to 05 NOV 2020

EC-3, 08 OCT 2020 to 05 NOV 2020