

VORTAC PIA 115.2 Chan 99	APP CRS 281°	Rwy Idg 10104 TDZE 651 Apt Elev 660
--	------------------------	--

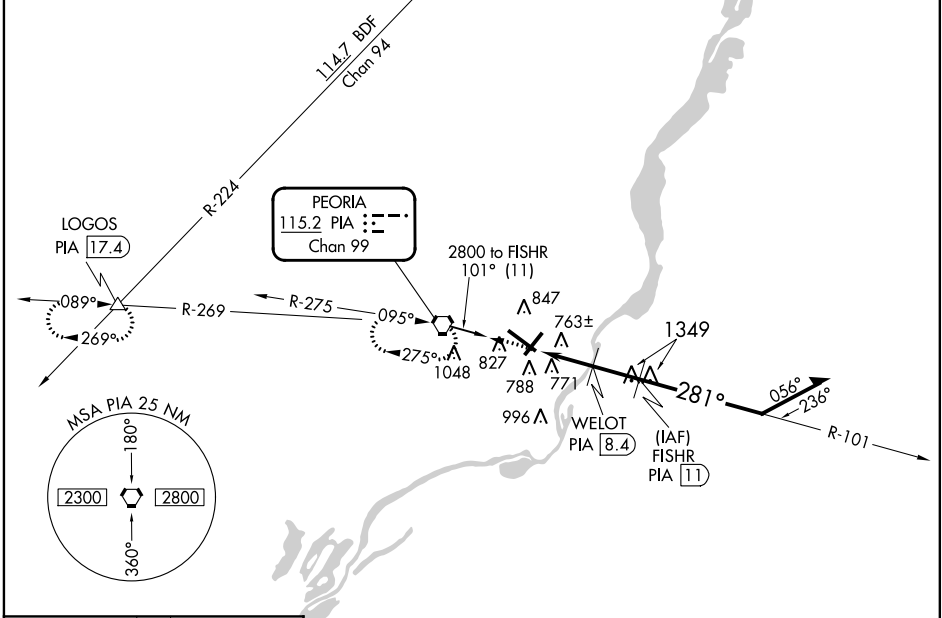
VOR/DME or TACAN RWY 31

GENERAL DOWNING-PEORIA INTL(PIA)

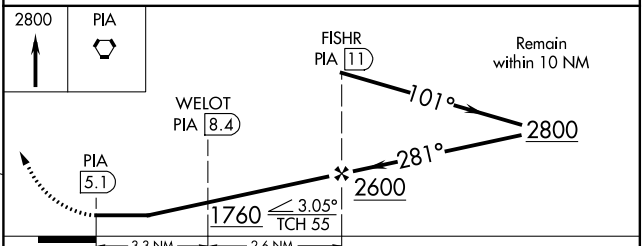
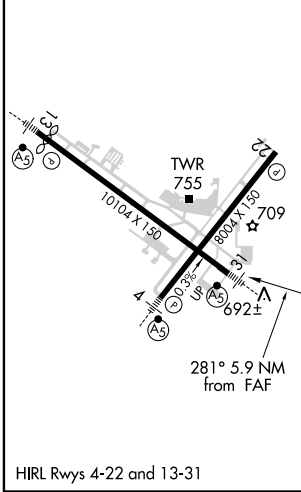
⚠ If local altimeter setting not available, use Logan County altimeter setting and increase all MDAs 100 feet. Inoperative table does not apply. Straight-in and Circling Rwy 31 NA at night. Circling Rwy 13 NA at night. Rwy 31 helicopter visibility reduction below RVR 5000 NA.

MALSR
AS
MISSED APPROACH: Climb to 2800 direct PIA VORTAC and hold, continue climb-in-hold to 2800. (TACAN aircraft continue via PIA R-269 to LOGOS Int/PIA 17.4 DME and hold west, right turn, 089° inbound).

ATIS 126.1 282.2	PEORIA APP CON 125.8 269.2 (305°-125°)	124.675 317.55 (126°-304°)	PEORIA TOWER 124.0 353.85	GND CON 121.85 348.6
----------------------------	--	-----------------------------------	-------------------------------------	--------------------------------



ELEV 660	D	TDZE 651
----------	----------	----------



CATEGORY	A	B	C	D
S-31	1040/50 389 (400-1)			1040/60 389 (400-1½)
C CIRCLING	1160-1 499 (500-1)		1180-1½ 519 (600-1½)	1400-2 739 (800-2)

EC-3, 08 OCT 2020 to 05 NOV 2020

EC-3, 08 OCT 2020 to 05 NOV 2020