

NORTH BAY VISUAL RWY 18

AL-625 (FAA)

ST PETE-CLEARWATER INTL (PIE)
ST. PETERSBURG-CLEARWATER, FLORIDA

ATIS 134.5
 TAMPA APP CON 125.3 316.05
 ST PETERSBURG TOWER ★ 118.3 (CTAF) 257.8
 GND CON 121.9 348.6
 CLNC DEL 120.6 350.2
 UNICOM 122.95

LAKE TARPON

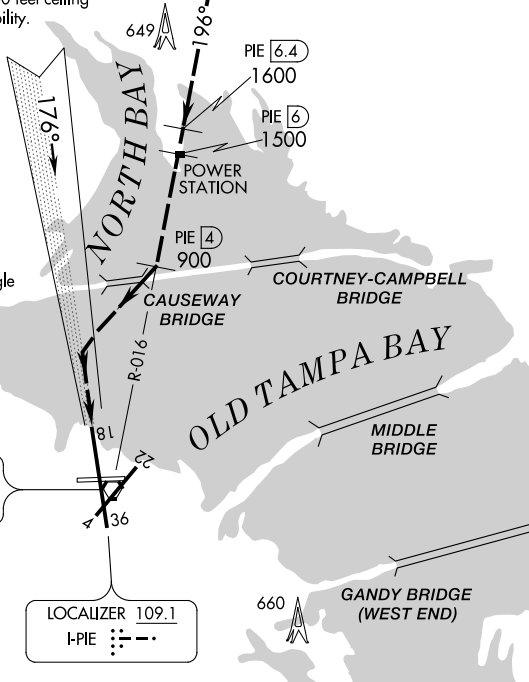
RADAR REQUIRED

PROCEDURE NOT AUTHORIZED AT NIGHT
 NOT AUTHORIZED WHEN TOWER NOT IN OPERATION

Weather Minimums: 2100 feet ceiling
 and 3 miles visibility.

GULF OF MEXICO

Vertical Guidance Navaid and Angle
 I-PIE 3.00°
 PAPI Rwy 18 3.00°



ST. PETERSBURG
 116.4 PIE --- · · ·
 Chan 111

LOCALIZER 109.1
 I-PIE --- · · ·

SE-3, 08 OCT 2020 to 05 NOV 2020

SE-3, 08 OCT 2020 to 05 NOV 2020

1NM	2	3	4	5	6	7	8	9	10	11	12	13	14	15	16
-----	---	---	---	---	---	---	---	---	----	----	----	----	----	----	----



NORTH BAY VISUAL APPROACH

When cleared for a NORTH BAY VISUAL APPROACH, aircraft will proceed visually from over the power station (PIE R-016, 6 DME) heading 196° direct to the Causeway Bridge, then right turn to intercept the final approach course to Rwy 18.

NORTH BAY VISUAL RWY 18

Amdt 6 29MAR18

27°55'N-82°41'W

ST. PETERSBURG-CLEARWATER, FLORIDA
ST PETE-CLEARWATER INTL (PIE)