


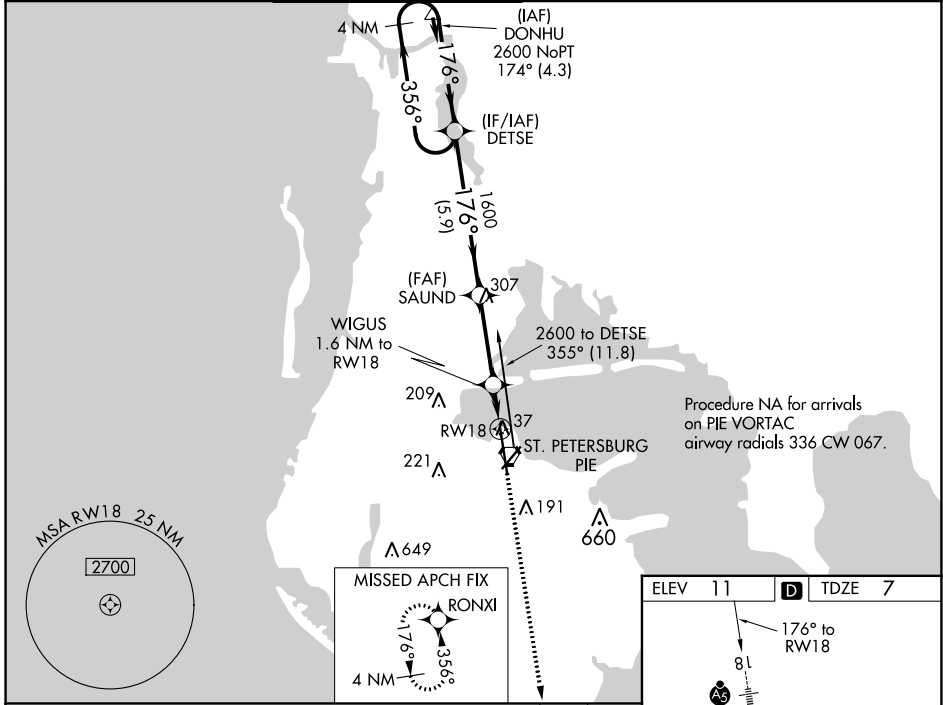
WAAS CH <b>61039</b> <b>W18A</b>	APP CRS <b>176°</b>	Rwy Idg TDZE Apt Elev	<b>9180</b> <b>7</b> <b>11</b>
--	------------------------	-----------------------------	--------------------------------------

# RNAV (GPS) RWY 18

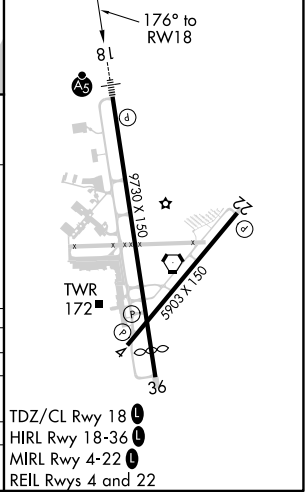
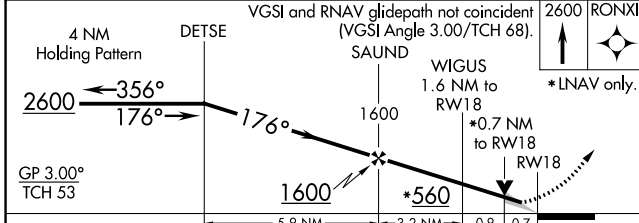
ST PETE-CLEARWATER INTL (PIE)

<p><b>⚠</b> For uncompensated Baro-VNAV systems, LNAV/VNAV NA below 3°C (38°F) or above 54°C (130°F). DME/DME RNP-0.3 NA. For inop MALSR, increase LNAV/VNAV all Cats visibility to RVR 4000 and LNAV visibility Cats C/D to RVR 4500.</p>	<p>MALSR</p>  <p>MISSED APPROACH: Climb to 2600 direct RONXI and hold.</p>
--	---

ATIS <b>134.5</b>	TAMPA APP CON <b>125.3 316.05</b>	ST. PETERSBURG TOWER★ <b>118.3 (CTAF) 0 257.8</b>	GND CON <b>121.9 348.6</b>	CLNC DEL <b>120.6 350.2</b>	UNICOM <b>122.95</b>
----------------------	--------------------------------------	--	-------------------------------	--------------------------------	-------------------------



ELEV 11	<b>D</b> TDZE 7
---------	-----------------



CATEGORY	A	B	C	D
LPV DA		207/18	200 (200-½)	
LNAV/VNAV DA		257/24	250 (300-½)	
LNAV MDA		300/24	293 (300-½)	
<b>CIRCLING</b>	520-1	509 (600-1)	640-1¾ 629 (700-1¾)	680-2 669 (700-2)

SE-3, 08 OCT 2020 to 05 NOV 2020

SE-3, 08 OCT 2020 to 05 NOV 2020