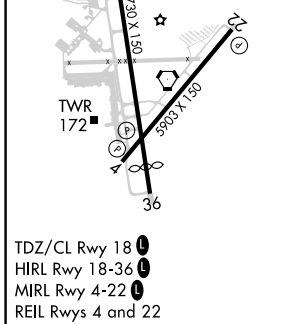
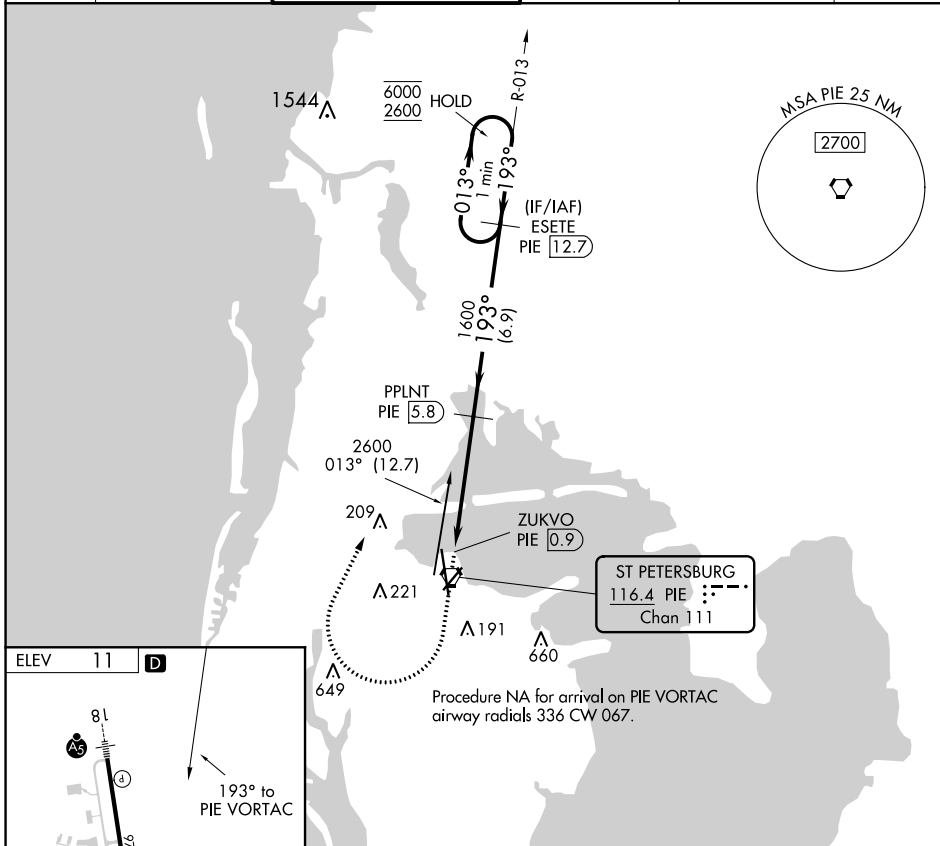


VORTAC PIE 116.4 Chan 111	APP CRS 193°	Rwy Idg TDZE Apt Elev	N/A N/A 11
---	------------------------	-----------------------------	-------------------------

VOR-B
ST PETE-CLEARWATER INTL (PIE)

DME required.		MISSED APPROACH: Climb to 700 then climbing right turn to 2600 on heading 030° and PIE VORTAC R-013 to ESETE/PIE 12.7 DME and hold.			
ATIS 134.5	TAMPA APP CON 125.3 316.05	ST. PETERSBURG TOWER★ 118.3 (CTAF) 0 257.8	GND CON 121.9 348.6	CLNC DEL 120.6 350.2	UNICOM 122.95



ST PETERSBURG-CLEARWATER, FLORIDA
Orig 28FEB19

700	2600	PIE R-013	ESETE PIE 12.7	ESETE PIE 12.7	One Minute Holding Pattern
↑	hdg 030°				
		ZUKVO PIE 0.9	PPLNT PIE 5.8	013° → 6000	← 193° 2600
		PIE VORTAC	1600		
		4.9 NM	6.9 NM		
CATEGORY	A	B	C	D	
CIRCLING	520-1	509 (600-1)	600-1½ 589 (600-1½)	620-2 609 (700-2)	

27°55'N-82°41'W

ST PETE-CLEARWATER INTL (PIE)
VOR-B

SE-3, 08 OCT 2020 to 05 NOV 2020

SE-3, 08 OCT 2020 to 05 NOV 2020