

WAAS CH <b>40341</b> <b>W13A</b>	APP CRS <b>128°</b>	Rwy Idg TDZE Apt Elev	<b>6901</b> <b>1302</b> <b>1302</b>
--	------------------------	-----------------------------	---

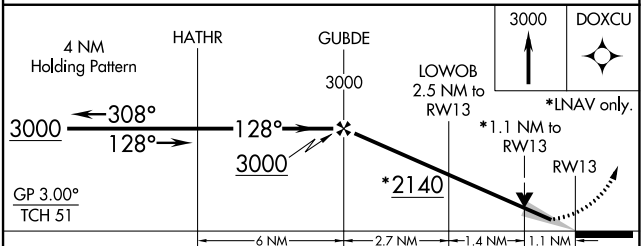
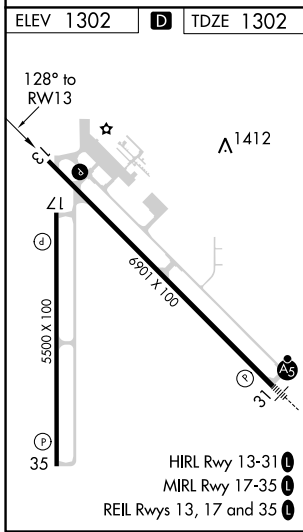
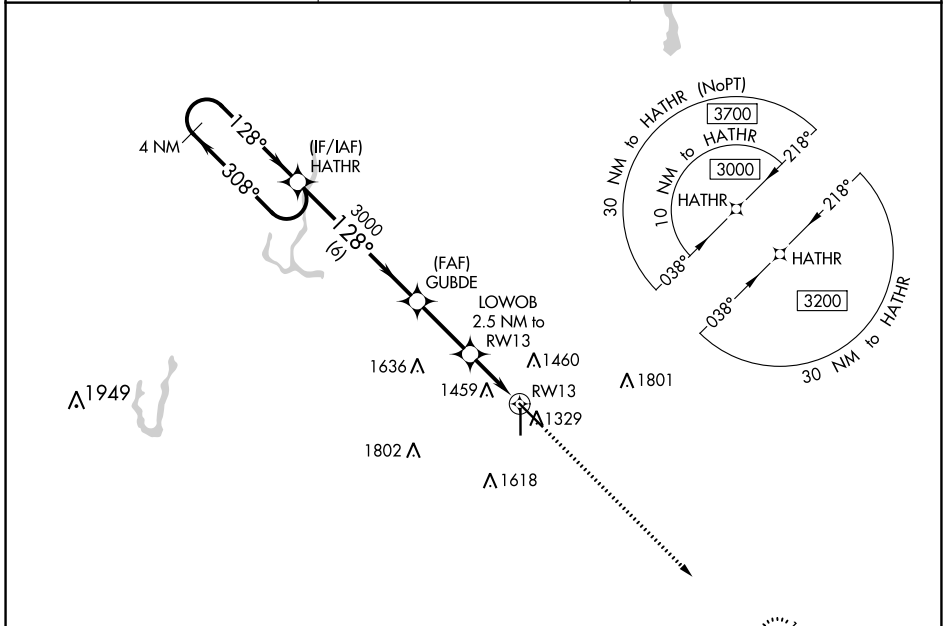
# RNAV (GPS) RWY 13

ABERDEEN RGNL (ABR)

**⚠** For uncompensated Baro-VNAV systems, LNAV/VNAV NA below -21°C (-5°F) or above 54°C (130°F).  
DME/DME RNP-0.3 NA.

MISSED APPROACH: Climb to 3000 direct DOXCU and hold.

ASOS <b>125.875</b>	MINNEAPOLIS CENTER <b>120.6 371.9</b>	UNICOM <b>122.7 (CTAF)</b>
------------------------	--	-------------------------------



CATEGORY	A	B	C	D
LPV DA	1502-3/4 200 (200-3/4)			
LNAV/VNAV DA	1752-13/8 450 (500-13/8)			
LNAV MDA	1700-1	398 (400-1)	1700-1 1/8	398 (400-1 1/8)
<b>CIRCLING</b>	1760-1 458 (500-1)	1860-1 558 (600-1)	1960-1 3/4 658 (700-1 3/4)	2160-2 3/4 858 (900-2 3/4)

NC-1, 08 OCT 2020 to 05 NOV 2020

NC-1, 08 OCT 2020 to 05 NOV 2020