

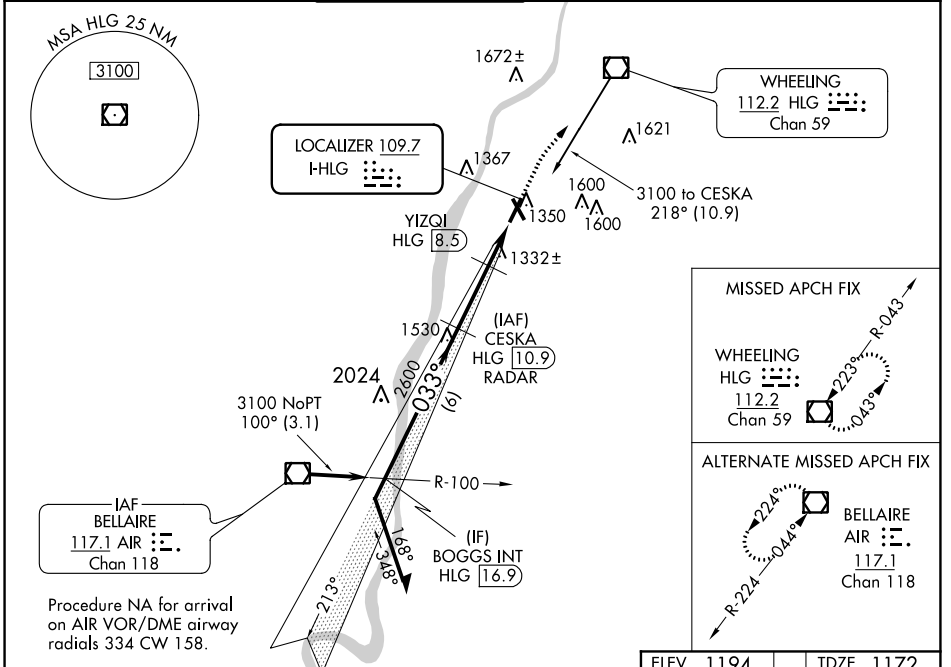
LOC I-HLG 109.7	APP CRS 033°	Rwy Idg 5002
		TDZE 1172
		Apt Elev 1194

ILS or LOC RWY 3

WHEELING OHIO COUNTY (HLG)

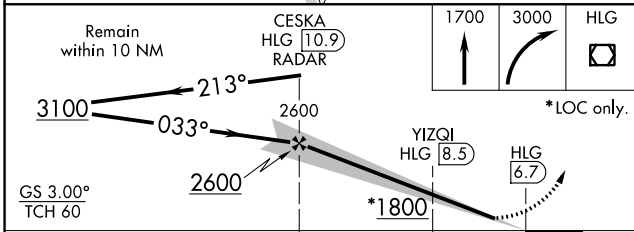
<p>▼ Inoperative table does not apply to S-ILS all Cats and S-LOC Cats A/B.</p> <p>▲ Autopilot coupled approach NA below 1401. DME or RADAR required.</p>	<p>MALSF</p> <p>MISSED APPROACH: Climb to 1700 then climbing right turn to 3000 direct HLG VOR/DME and hold.</p>
---	--

ASOS 127.375	PITTSBURGH APP CON 125.275 285.575	WHEELING TOWER * 118.1 (CTAF) 0257.8	GND CON 121.75	CNLC DEL 125.275 (when twr closed)	UNICOM 122.95
------------------------	--	--	--------------------------	---	-------------------------



NE-4, 08 OCT 2020 to 05 NOV 2020

NE-4, 08 OCT 2020 to 05 NOV 2020



ELEV 1194	TDZE 1172
-----------	-----------

033° 4.3 NM from FAF

HIRL Rwy 3-21
MIRL Rwy 16-34
REIL Rwys 21 and 34

FAF to MAP 4.3 NM					
Knots	60	90	120	150	180
Min:Sec	4:18	2:52	2:09	1:43	1:26

CATEGORY	A	B	C	D
S-ILS 3		1372-1	200 (200-1)	
S-LOC 3	1800-1	628 (700-1)	1800-1½	628 (700-1½)
C CIRCLING	1800-1	606 (700-1)	1900-2 706 (800-2)	1920-2¼ 726 (800-2¼)
YIZQI FIX MINIMUMS				
S-LOC 3		1600-1	428 (500-1)	
C CIRCLING	1720-1 526 (600-1)	1740-1 546 (600-1)	1900-2 706 (800-2)	1920-2¼ 726 (800-2¼)