

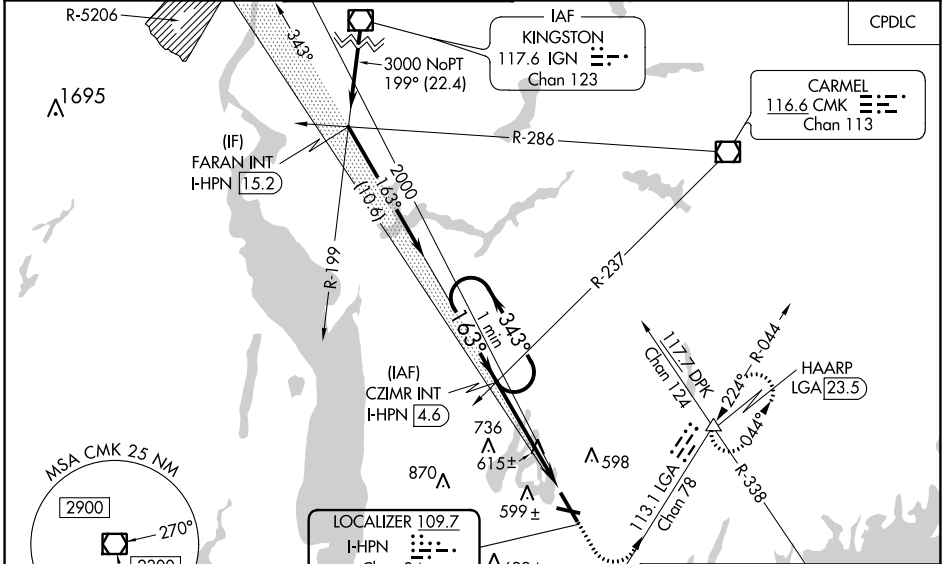
LOC/DME I-HPN <b>109.7</b> Chan 34	APP CRS <b>163°</b>	Rwy Idg <b>6549</b> TDZE <b>439</b> Apt Elev <b>439</b>
--	------------------------	---

# ILS RWY 16 (SA CAT I & II)

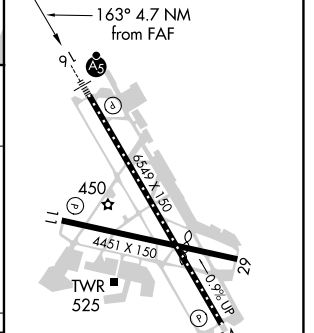
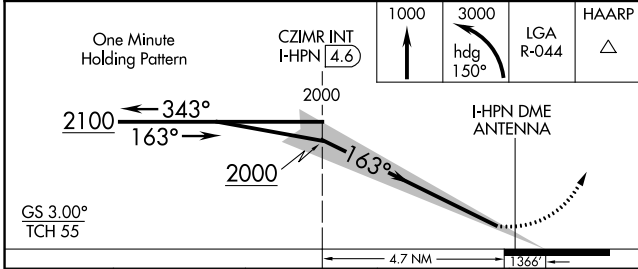
WESTCHESTER COUNTY (HPN)

<p><b>▽</b> SA CAT I: Requires specific OPSPEC, MSPEC, or LOA approval and use of HUD to DH.</p> <p><b>△</b> SA CAT II: Reduced lighting; Requires specific OPSPEC, MSPEC, or LOA approval and use of autoland or HUD to touchdown. Procedure NA when tower closed.</p>	<p>MALSRL</p>	<p>MISSED APPROACH: Climb to 1000 then climbing left turn to 3000 on heading 150° and LGA VOR/DME R-044 to HAARP INT/ LGA 23.5 DME and hold, continue climb-in-hold to 3000.</p>
	<p>CPDLC</p>	

D-ATIS <b>133.8</b>	NEW YORK APP CON <b>120.8 126.4 257.65</b>	WESTCHESTER TOWER ★ <b>118.575</b> (CTAF) <b>0 284.65</b>	GND CON <b>121.825</b>	CLNC DEL <b>127.25</b>	CLNC DEL <b>126.4</b> (when twr closed)	UNICOM <b>122.95</b>
------------------------	---	--	---------------------------	---------------------------	---	-------------------------



ELEV 439	TDZE 439
----------	----------



CATEGORY	A	B	C	D
S-ILS 16		SA CAT I RA 198/14	150 DA 589	
S-ILS 16		SA CAT II RA 113/12	100 DA 539	

**SA CATEGORY I & II SPECIAL AIRCREW & AIRCRAFT CERTIFICATION REQUIRED**

- REIL Rwy 11 and 34
- HIRL Rwy 16-34
- MIRL Rwy 11-29
- TDZ/CL Rwy 16

NE-2, 08 OCT 2020 to 05 NOV 2020

NE-2, 08 OCT 2020 to 05 NOV 2020