

LOC/DME F-OJZ 109.7 Chan 34	APP CRS 343°	Rwy Idg 6549 TDZE 401 Apt Elev 439
---	------------------------	---

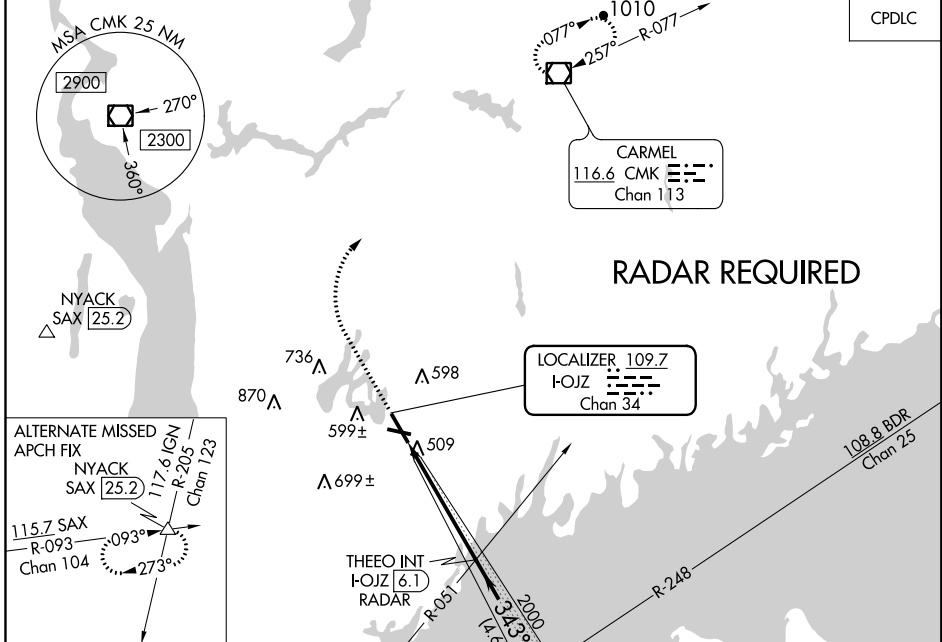
ILS or LOC RWY 34

WESTCHESTER COUNTY (HPN)

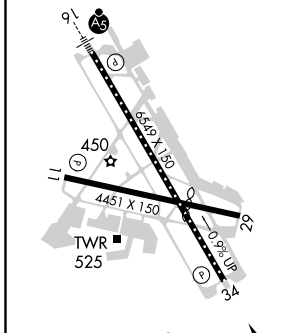
⚠ Circling Rwy 11, 29 NA at night.
⚠ Rwy 34 helicopter visibility reduction below 3/4 SM NA.

MISSED APPROACH: Climb to 1100 then climbing right turn to 2300 direct CMK VOR/DME and hold.

D-ATIS 133.8	NEW YORK APP CON 120.8 126.4 257.65	WESTCHESTER TOWER ★ 118.575 (CTAF) 284.65	GND CON 121.825	CLNC DEL 127.25	CLNC DEL 126.4 (when twr closed)	UNICOM 122.95
------------------------	---	---	---------------------------	---------------------------	---	-------------------------



ELEV 439	D TDZE 401
-----------------	--------------------------



Knots	60	90	120	150	180
Min:Sec	4:54	3:16	2:27	1:58	1:38

☑ CIRCLING

1100	2300	CMK		
*LOC only.		*I-OJZ 2.3	I-OJZ 1.2	
THEEO INT I-OJZ 6.1 RADAR		JETAX INT I-OJZ 10.7 RADAR		
2000		2000		GS 3.00° TCH 55
1.2 NM		3.7 NM		4.6 NM
CATEGORY	A	B	C	D
S-ILS 34	742/60		341 (400-1½)	
S-LOC 34	800/55	399 (400-1)		800/60 399 (400-1½)
☑ CIRCLING	980-1	541 (600-1)	1080-1¾ 641 (700-1¾)	1200-2½ 761 (800-2½)

NE-2, 08 OCT 2020 to 05 NOV 2020

NE-2, 08 OCT 2020 to 05 NOV 2020