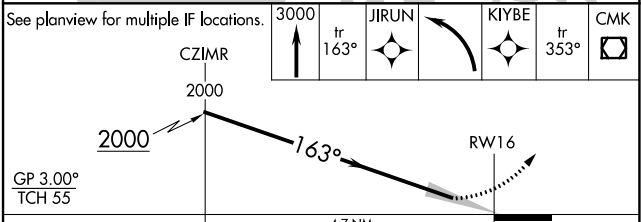
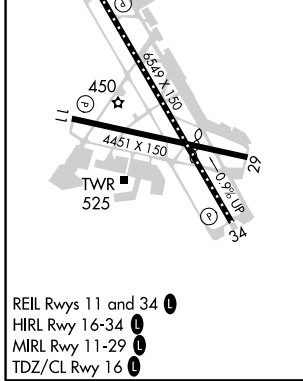
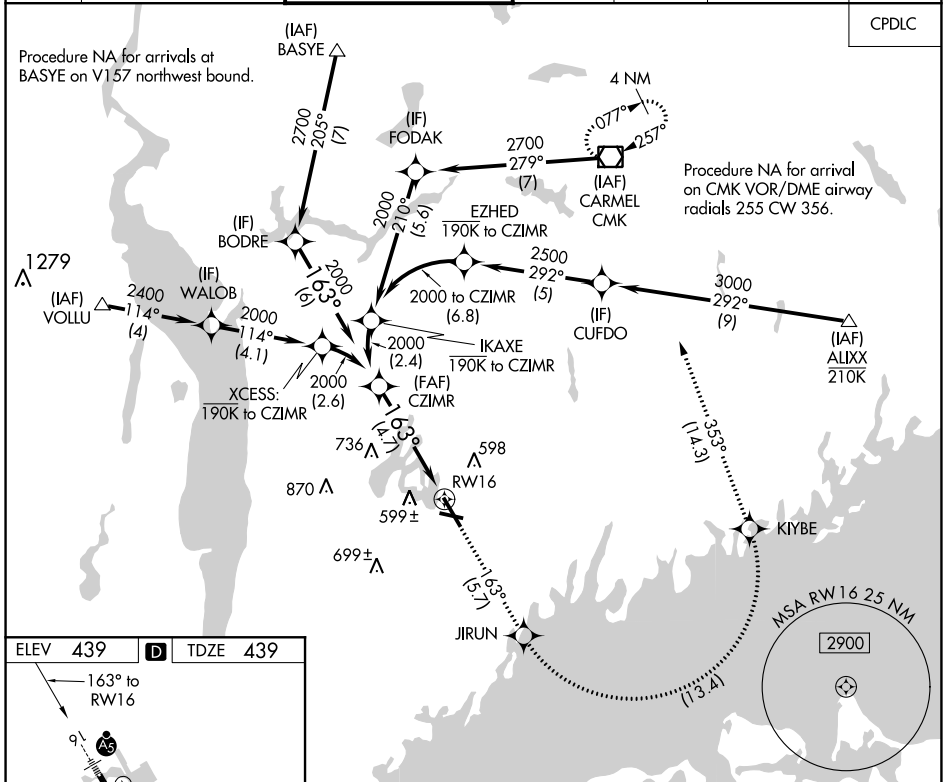


APP CRS	Rwy Idg	<b>6549</b>
<b>163°</b>	TDZE	<b>439</b>
	Apt Elev	<b>439</b>

# RNAV (RNP) Z RWY 16

WESTCHESTER COUNTY (HPN)

<p><b>▼</b> For uncompensated Baro-VNAV systems, procedure NA below -14C (7°F) or above 54°C (130°F). RF required. GPS required.</p>		<p>MALSR</p>	<p>MISSED APPROACH: Climb to 3000 on track 163° to JIRUN, left turn to KIYBE, then track 353° to CMK VOR/DME and hold.</p>			
D-ATIS	NEW YORK APP CON	WESTCHESTER TOWER ★	GND CON	CLNC DEL	CLNC DEL	UNICOM
<b>133.8</b>	<b>120.8 126.4 257.65</b>	<b>118.575 (CTAF) 0 284.65</b>	<b>121.825</b>	<b>127.25</b>	<b>126.4</b> (when twr closed)	<b>122.95</b>



CATEGORY	A	B	C	D
RNP 0.15 DA		810/40	371 (400-¾)	
RNP 0.30 DA		950-1¼	511 (600-1¼)	

**AUTHORIZATION REQUIRED**

NE-2, 08 OCT 2020 to 05 NOV 2020

NE-2, 08 OCT 2020 to 05 NOV 2020