

RNAV (GPS) Y RWY 16

WESTCHESTER COUNTY (HPN)

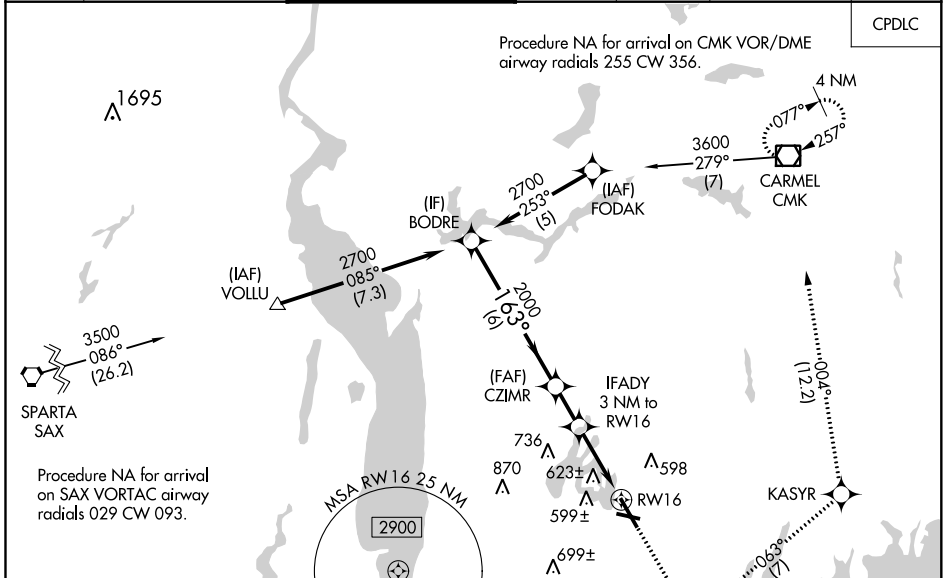
WAAS CH 69519 W16A	APP CRS 163°	Rwy Idg TDZE 439 Apt Elev 439
--	------------------------	---

⚠ For uncompensated Baro-VNAV systems, LNAV/VNAV NA below -1.5°C (5°F) or above 54°C (130°F).
⚠ Circling Rwy 11, 29 NA at night.
 DME/DME RNP-0.3 NA.

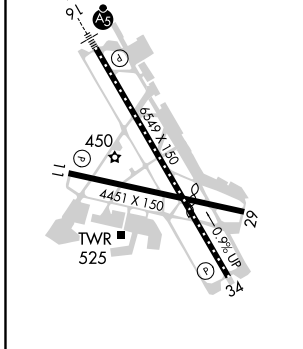
MALSR

MISSED APPROACH: Climb to 2300 direct IKEWI and left turn on track 063° to KASYR and on track 004° to CMK VOR/DME and hold.

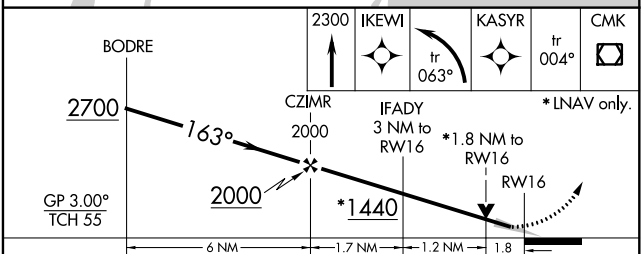
D-ATIS 133.8	NEW YORK APP CON 120.8 126.4 257.65	WESTCHESTER TOWER * 118.575 (CTAF) 284.65	GND CON 121.825	CLNC DEL 127.25	CLNC DEL 126.4 (when twr closed)	UNICOM 122.95
------------------------	---	---	---------------------------	---------------------------	---	-------------------------



ELEV 439	D TDZE 439
-----------------	--------------------------



REIL Rwsy 11 and 34 **Ⓛ**
 HIRL Rwy 16-34 **Ⓛ**
 MIRL Rwy 11-29 **Ⓛ**
 TDZ/CL Rwy 16 **Ⓛ**



CATEGORY	A	B	C	D
LPV DA		689/24	250 (300-½)	
LNAV/VNAV DA		978-1½	539 (600-1½)	
LNAV MDA	1060/24	621 (700-½)	1060/60 621 (700-1¼)	1060-1½ 621 (700-1½)
C CIRCLING	1060-1	621 (700-1)	1080-1¾ 641 (700-1¾)	1200-2 ½ 761 (800-2½)

NE-2, 08 OCT 2020 to 05 NOV 2020

NE-2, 08 OCT 2020 to 05 NOV 2020