

WAAS CH <b>70408</b> <b>W36A</b>	APP CRS <b>003°</b>	Rwy Idg TDZE Apt Elev	<b>5001</b> <b>662</b> <b>663</b>
--	------------------------	-----------------------------	---

# RNAV (GPS) RWY 36

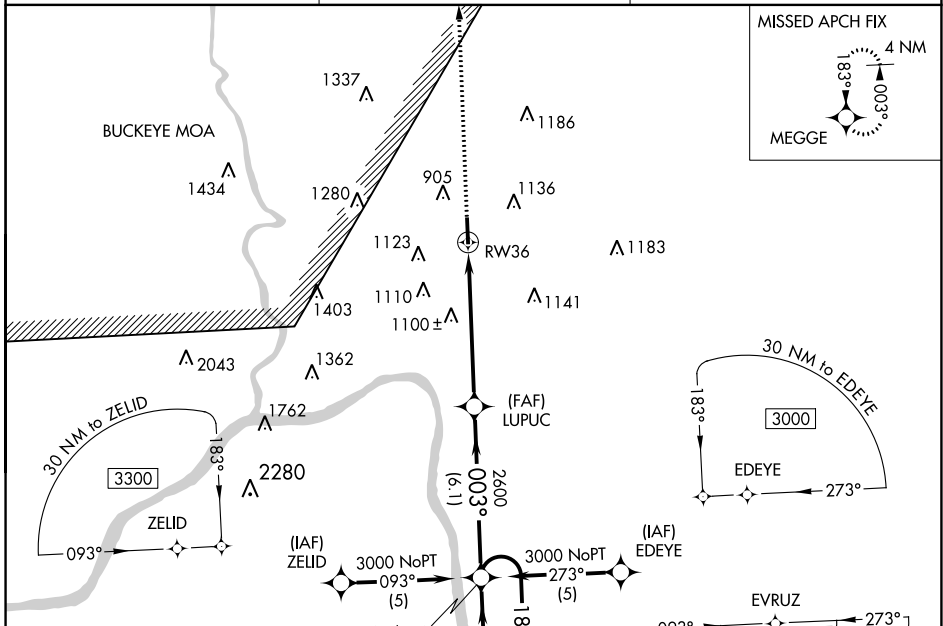
GREATER PORTSMOUTH RGNL (PMH)

**▼** When local altimeter setting not received, use Huntington altimeter setting and increase all DA 96 feet and all MDA 100 feet and LPV visibility ¼ mile all Cats, LNAV Cat B visibility ¼ mile, Cat C, D visibility ½ mile, and Circling Cat B visibility ¼ mile, Cat C visibility ½ mile and Cat D visibility ¼ mile. Visibility reduction by helicopters NA. DME/DME RNP-0.3 NA.

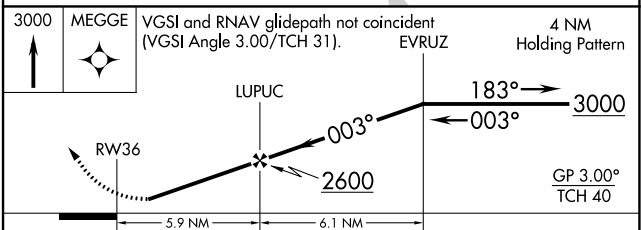
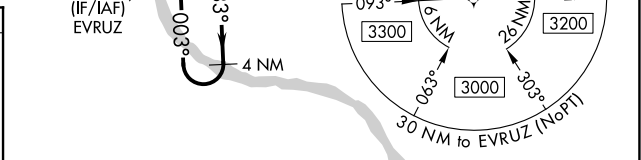
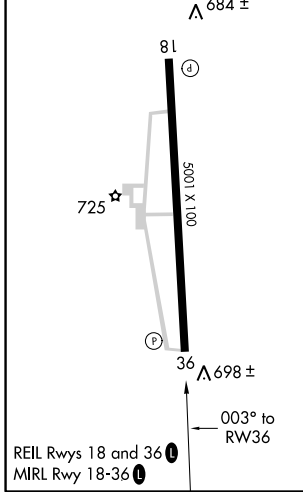
**▲ NA**

**MISSED APPROACH:** Climb to 3000 direct MEGGE and hold.

AWOS-3 <b>125.175</b>	HUNTINGTON APP CON <b>128.4 270.1</b>	UNICOM <b>122.8 (CTAF) 0</b>
--------------------------	--	---------------------------------



ELEV 663	TDZE 662
----------	----------



CATEGORY	A	B	C	D
LPV DA	912-1 250 (300-1)			
LNAV MDA	1400-1	738 (800-1)	1400-2 738 (800-2)	1400-2½ 738 (800-2½)
CIRCLING	1400-1	737 (800-1)	1400-2 737 (800-2)	1440-2½ 777 (800-2½)

EC-2, 08 OCT 2020 to 05 NOV 2020

EC-2, 08 OCT 2020 to 05 NOV 2020