

ILS or LOC RWY 31

DALLAS EXECUTIVE (R.B.D)

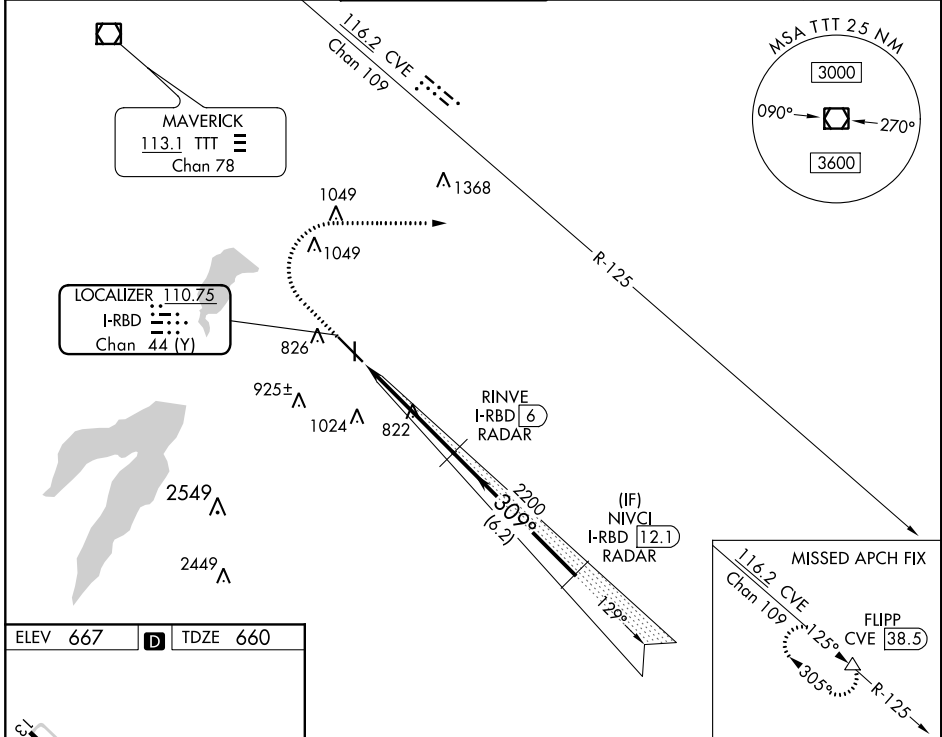
LOC/DME I-RBD 110.75 Chan 44 (Y)	APP CRS 309°	Rwy Idg TDZE 660 Apt Elev 667
--	------------------------	---

RADAR required for procedure entry.
DME or RADAR required for LOC only.

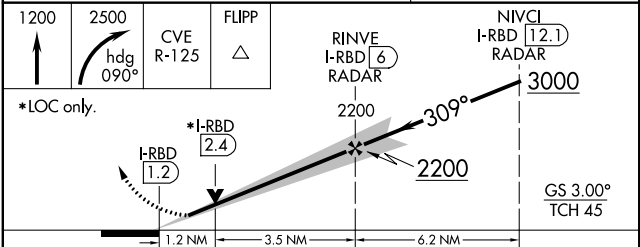
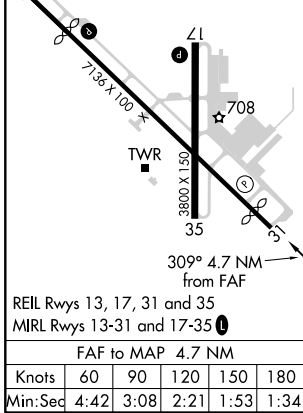
MISSED APPROACH: Climb to 1200 then climbing right turn to 2500 on heading 090° and CVE VOR/DME R-125 to FLIPP/CVE 38.5 DME and hold.

⚠ Circling Rwy 13 NA at night.

ATIS 126.35	REGIONAL APP CON 125.2 343.65	EXECUTIVE TOWER* 127.25 (CTAF) 0	GND CON 119.475	CLNC DEL 118.625	UNICOM 122.95
-----------------------	---	--	---------------------------	----------------------------	-------------------------



ELEV 667	D	TDZE 660
-----------------	----------	-----------------



CATEGORY	A	B	C	D
S-ILS 31	860-3/4 200 (200-3/4)			
S-LOC 31	1080-1 420 (500-1)	1080-1 1/8 420 (500-1 1/8)		
C CIRCLING	1160-1 493 (500-1)	1220-1 553 (600-1)	1340-2 673 (700-2)	1400-2 1/4 733 (800-2 1/4)

SC-2, 08 OCT 2020 to 05 NOV 2020

SC-2, 08 OCT 2020 to 05 NOV 2020