

KUSSO SIX DEPARTURE (RNAV)

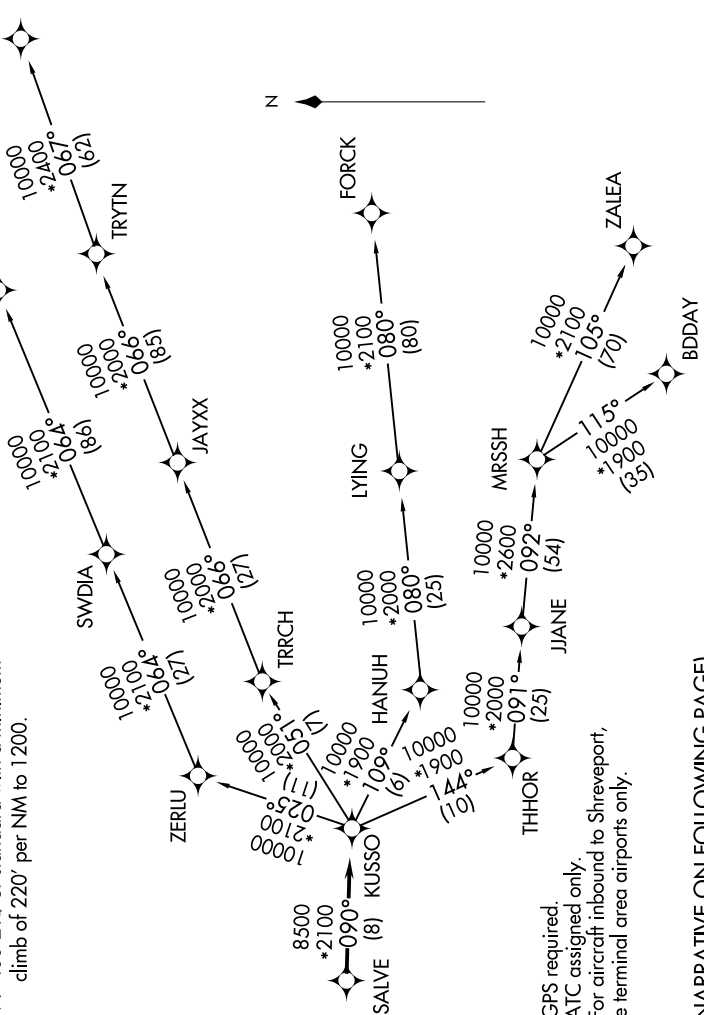
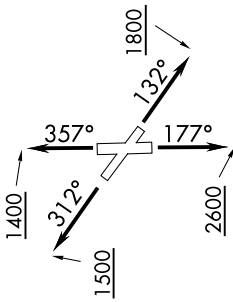
SC-2, 08 OCT 2020 to 05 NOV 2020

TOP ALTITUDE: ASSIGNED BY ATC

TAKEOFF MINIMUMS

Rwys 13, 31, 35: Standard.
Rwy 17: 400-2³/₄ or standard with a minimum
climb of 220' per NM to 1200.

ATIS 126.35
CLINC DEL 118.625
GND CON 119.475
EXECUTIVE TOWER * 127.25 (CTAF)
REGIONAL DEP CON 125.2343.65



NOTE: RADAR required.
 NOTE: RNAV 1.
 NOTE: DME/DME/IRU or GPS required.
 NOTE: BDDAY transition: ATC assigned only.
 NOTE: MRSSH transition: For aircraft inbound to Shreveport,
 Jackson and Monroe terminal area airports only.

(NARRATIVE ON FOLLOWING PAGE)

NOTE: Chart not to scale.

SC-2, 08 OCT 2020 to 05 NOV 2020