

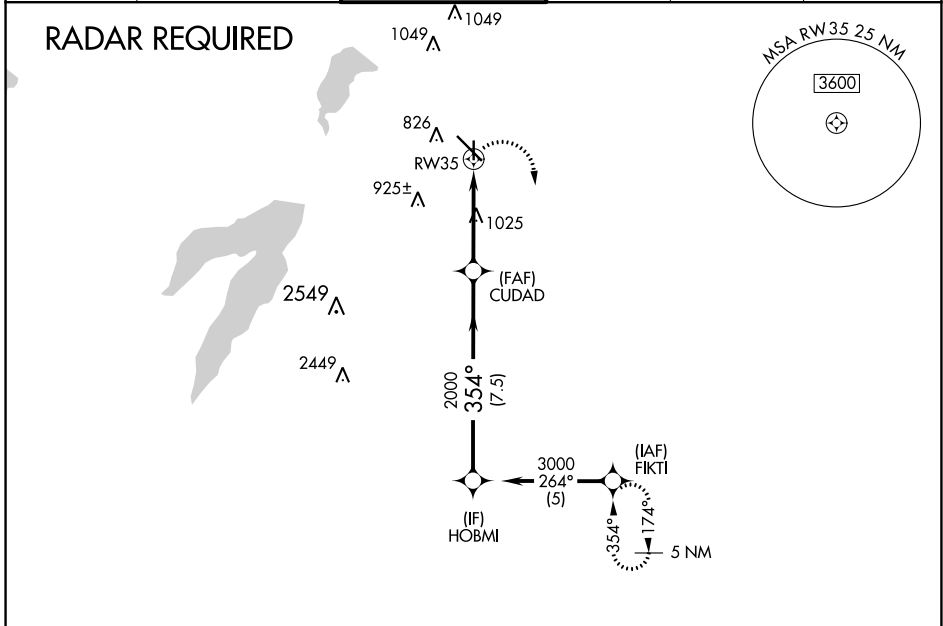
APP CRS 354°	Rwy Idg 3800
	TDZE 659
	Apt Elev 661

RNAV (GPS) RWY 35

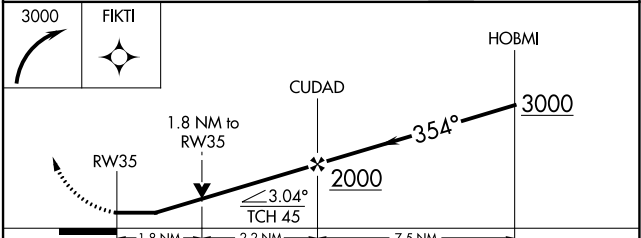
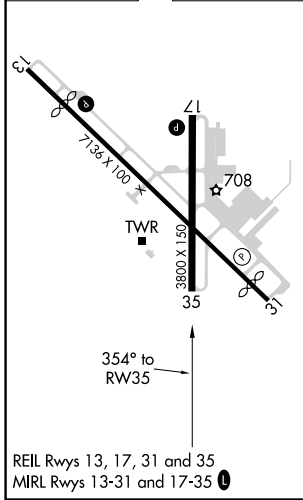
DALLAS EXECUTIVE (R.B.D)

RNP APCH.	MISSED APPROACH: Climbing right turn to 3000 direct FIKTI and hold.
<p>▽ Circling Rwy 13 NA at night. When local altimeter setting not received use Dallas Love Field altimeter setting and increase all MDAs 60 feet and increase Circling Cat D visibility ¼ SM.</p> <p>▲</p>	

ATIS 126.35	REGIONAL APP CON 125.2 343.65	EXECUTIVE TOWER ★ 127.25 (CTAF) 0	GND CON 119.475	CLNC DEL 118.625	UNICOM 122.95
-----------------------	---	---	---------------------------	----------------------------	-------------------------



ELEV 661	D	TDZE 659
----------	----------	----------



CATEGORY	A	B	C	D
LNAV MDA	1280-1 621 (700-1)		1280-1¾ 621 (700-1¾)	1280-2 621 (700-2)
C CIRCLING	1280-1 619 (700-1)		1340-2 679 (700-2)	1400-2¼ 739 (800-2¼)

SC-2, 08 OCT 2020 to 05 NOV 2020

SC-2, 08 OCT 2020 to 05 NOV 2020