

VOR/DME CVE 116.2 Chan 109	APP CRS 165°	Rwy Idg 3800 TDZE 658 Apt Elev 661
--	------------------------	---

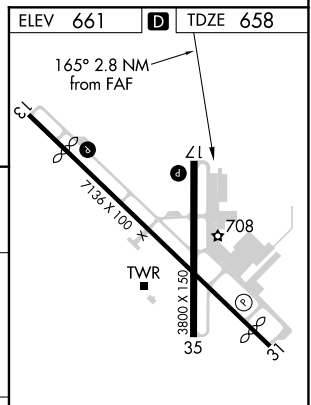
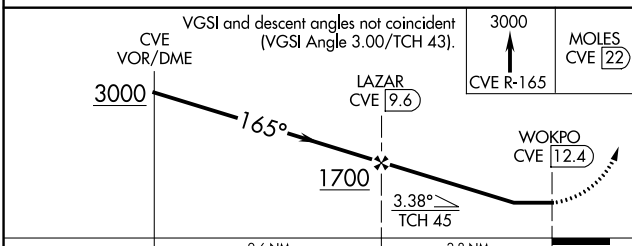
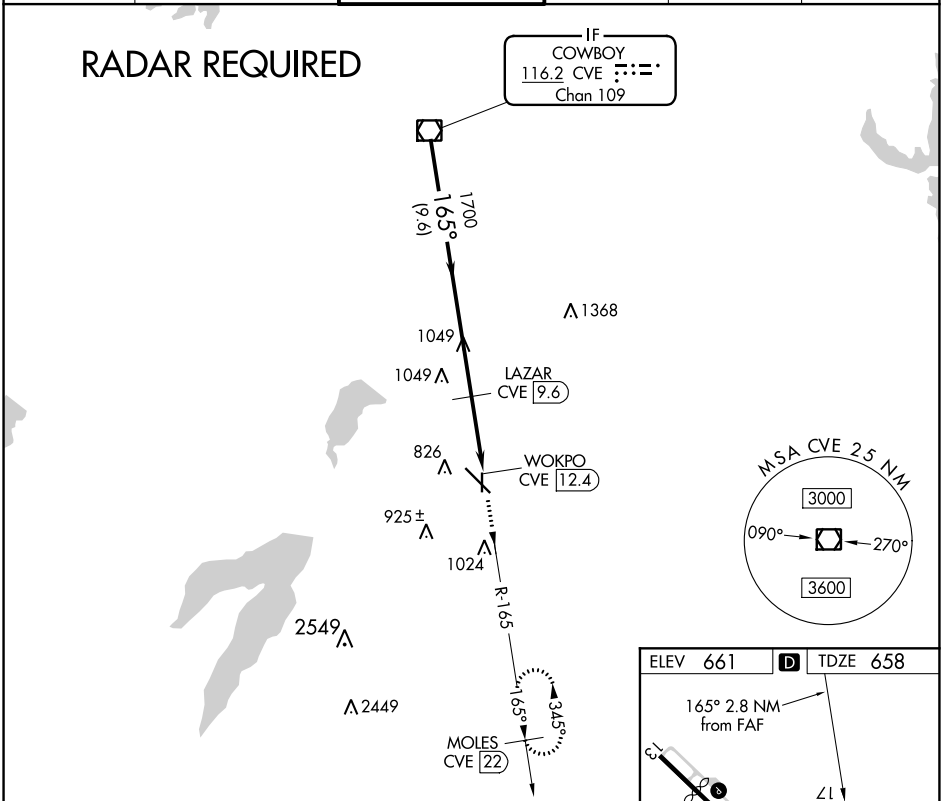
VOR/DME RWY 17

DALLAS EXECUTIVE (RBD)

⚠ Circling Rwy 13 NA at night. When local altimeter setting not received use Dallas Love Field altimeter setting and increase all MDAs 60 feet and increase Circling Cat D visibility 1/4 SM.

⚠ MISSED APPROACH: Climb to 3000 via CVE R-165 to MOLES 22 DME and hold.

ATIS 126.35	REGIONAL APP CON 125.2 343.65	EXECUTIVE TOWER * 127.25 (CTAF)	GND CON 119.475	CLNC DEL 118.625	UNICOM 122.95
-----------------------	---	---	---------------------------	----------------------------	-------------------------



CATEGORY	A	B	C	D
S-17	1080-1	422 (500-1)	1080-1 1/4	422 (500-1 1/4)
C CIRCLING	1160-1 499 (500-1)	1220-1 559 (600-1)	1340-2 679 (700-2)	1400-2 1/4 739 (800-2 1/4)

REIL Rwy 13, 17, 31 and 35
MIRL Rwy 13-31 and 17-35

SC-2, 08 OCT 2020 to 05 NOV 2020

SC-2, 08 OCT 2020 to 05 NOV 2020