

RNAV (GPS) RWY 34

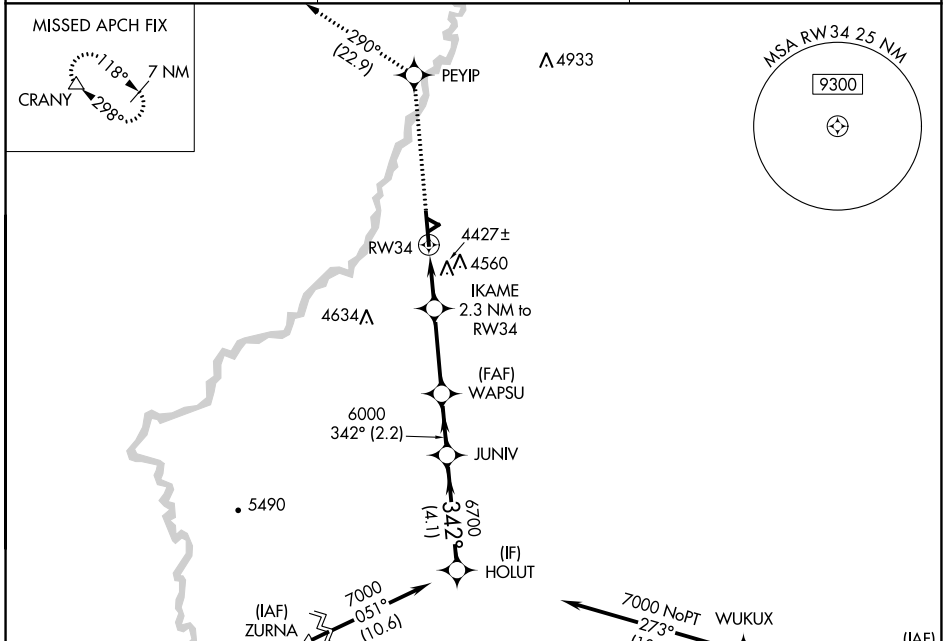
WORLAND MUNI (WRL)

APP CRS	Rwy Idg	7000
342°	TDZE	4252
	Apt Elev	4252

⚠ When local altimeter setting not received, use Greybull altimeter setting and increase all MDA 140 feet, and all visibilities ½ mile. DME/DME RNP-0.3 NA. Helicopter visibility reduction below ¾ SM NA.

MISSED APPROACH: Climb to 8500 direct PEYIP and on track 290° to CRANY and hold.

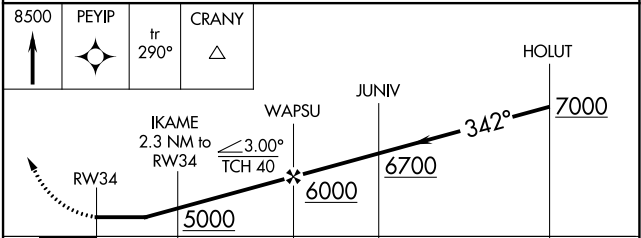
ASOS 135.475	SALT LAKE CENTER 133.25 285.6	UNICOM 123.05 (CTAF)
------------------------	---	--------------------------------



ELEV 4252	D	TDZE 4252
REIL Rws 16 and 34		
MIRL Rwy 16-34		

Detailed diagram of RWY 34 showing the elevation profile. The runway length is 2502 x 60 ft. Key altitudes include 4223 and 7000. Climb gradients are specified as 1.1% UP, 0.5% UP, and 1.6% UP. A 342° bearing is shown relative to RWY 34.

Procedure NA for arrivals at ZURNA on V319 southbound and at JTIP on V401 eastbound.



CATEGORY	A	B	C	D
LNAV MDA	4680-1	428 (500-1)	4680-1¼	428 (500-1¼)
CIRCLING	4880-1 628 (700-1)	4900-1 648 (700-1)	4900-1¾ 648 (700-1¾)	4900-2 648 (700-2)

NW-1, 08 OCT 2020 to 05 NOV 2020

NW-1, 08 OCT 2020 to 05 NOV 2020