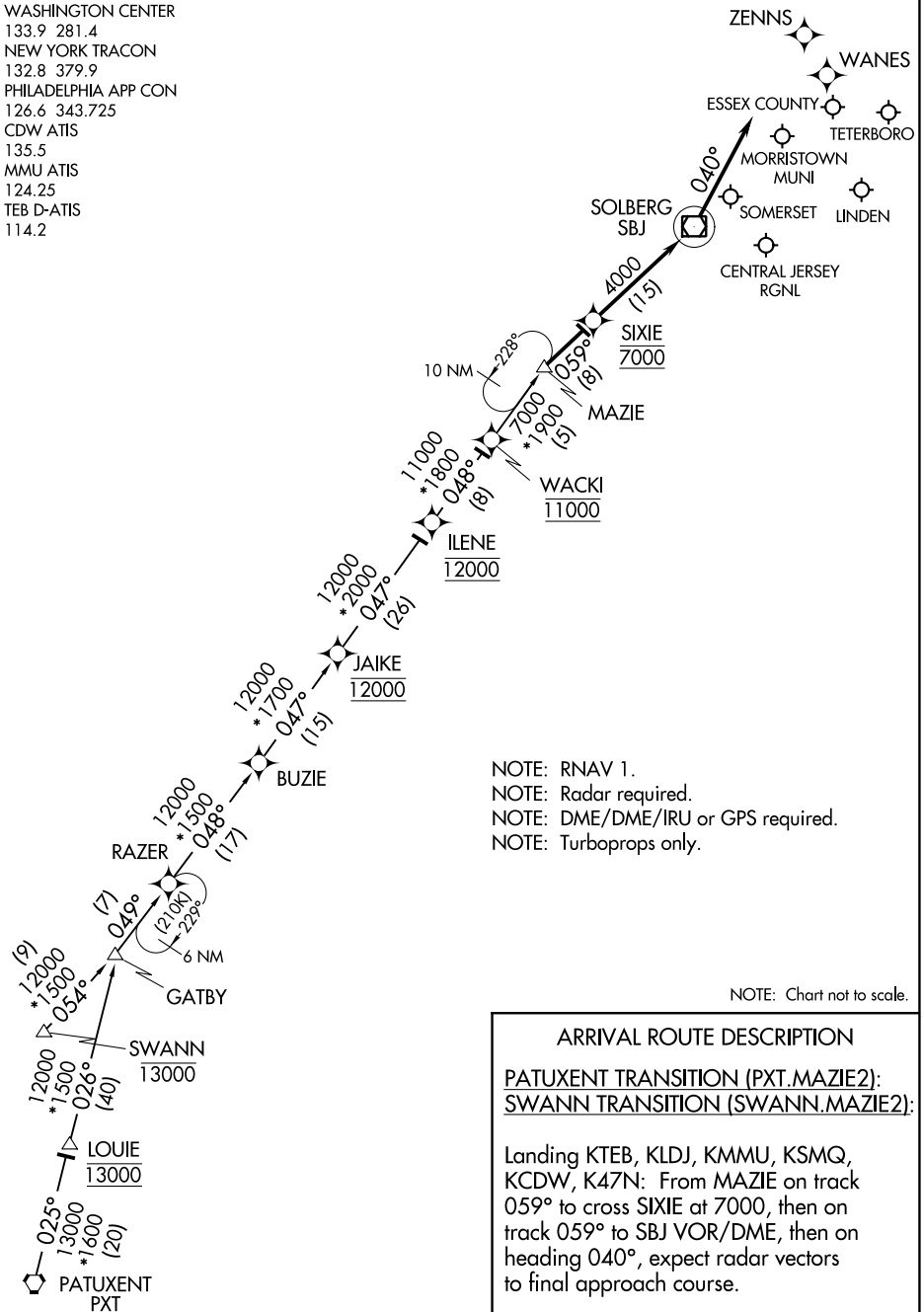


MAZIE TWO ARRIVAL (RNAV)

TETERBORO, NEW JERSEY

WASHINGTON CENTER
 133.9 281.4
 NEW YORK TRACON
 132.8 379.9
 PHILADELPHIA APP CON
 126.6 343.725
 CDW ATIS
 135.5
 MMU ATIS
 124.25
 TEB D-ATIS
 114.2



- NOTE: RNAV 1.
- NOTE: Radar required.
- NOTE: DME/DME/IRU or GPS required.
- NOTE: Turboprops only.

NOTE: Chart not to scale.

ARRIVAL ROUTE DESCRIPTION

PATUXENT TRANSITION (PXT.MAZIE2):
SWANN TRANSITION (SWANN.MAZIE2):

Landing KTEB, KLDJ, KMMU, KSMQ, KCDW, K47N: From MAZIE on track 059° to cross SIXIE at 7000, then on track 059° to SBJ VOR/DME, then on heading 040°, expect radar vectors to final approach course.

NE-2, 08 OCT 2020 to 05 NOV 2020

NE-2, 08 OCT 2020 to 05 NOV 2020

MAZIE TWO ARRIVAL (RNAV)

TETERBORO, NEW JERSEY