

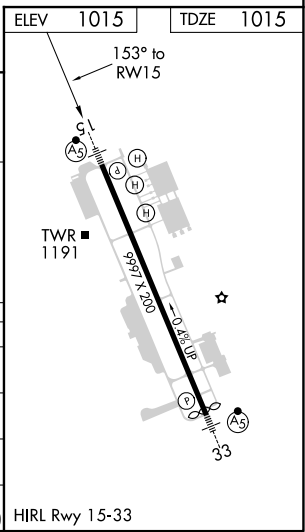
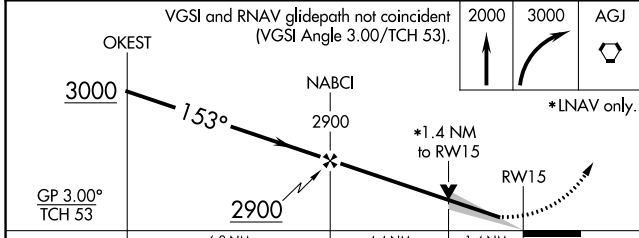
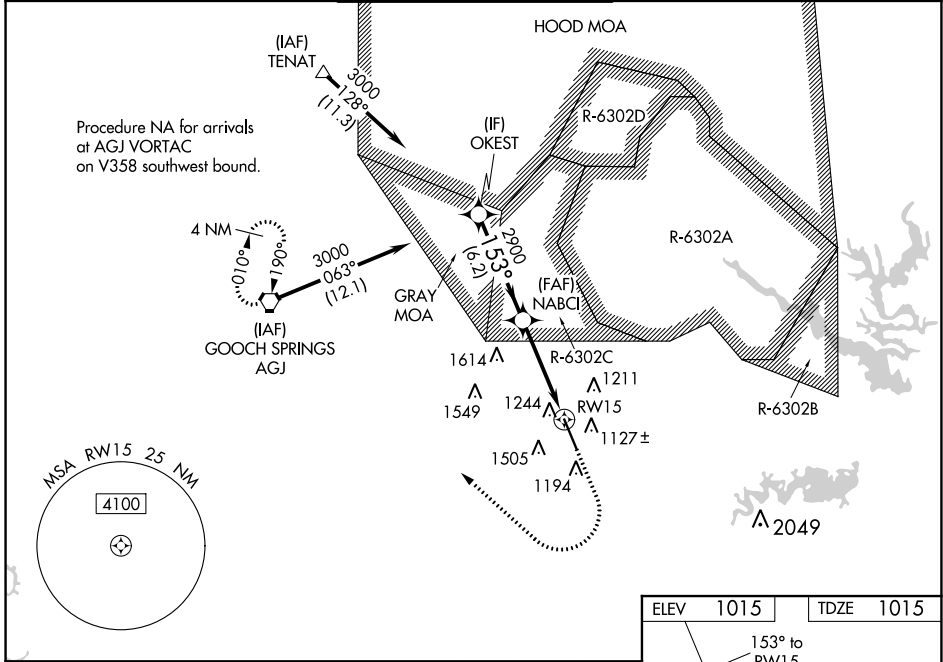
WAAS CH 78099 W15A	APP CRS 153°	Rwy ldg TDZE Apt Elev	9997 1015 1015
--	------------------------	-----------------------------	---

RNAV (GPS) RWY 15

ROBERT GRAY AAF (GRK)

	For uncompensated Baro-VNAV systems, LNAV/VNAV NA below -17°C (2°F) or above 54°C (130°F). Circling NA west of Rwy 15-33. DME/DME RNP-0.3 NA. For inop ALS, increase LPV Cat E visibility to RVR 4000, LNAV/VNAV all Cats visibility to 1 3/8 SM and LNAV Cats C/D/E visibility to 1 3/8 SM. # RVR 1800 authorized with the use of FD or AP or HUD to DA.	MALSR 	MISSED APPROACH: Climb to 2000 then climbing right turn to 3000 direct AGJ VORTAC and hold.
--	--	-----------	---

ATIS 124.9	GRAY APP CON 120.075 323.15	GRAY TOWER 120.75 285.5	GND CON 121.8 279.5	CLNC DEL 126.2 251.1
----------------------	---------------------------------------	-----------------------------------	-------------------------------	--------------------------------



CATEGORY	A	B	C	D	E
LPV DA #	1215/24		200 (200-1/2)		
LNAV/VNAV DA	1531/55		516 (600-1)		
LNAV MDA	1520/24	505 (600-1/2)	1520/55	505 (600-1)	
CIRCLING	1540-1	525 (600-1)	1560-1 1/2 545 (600-1 1/2)	1620-2 605 (700-2)	1740-2 1/2 725 (800-2 1/2)

SC-3, 08 OCT 2020 to 05 NOV 2020

SC-3, 08 OCT 2020 to 05 NOV 2020