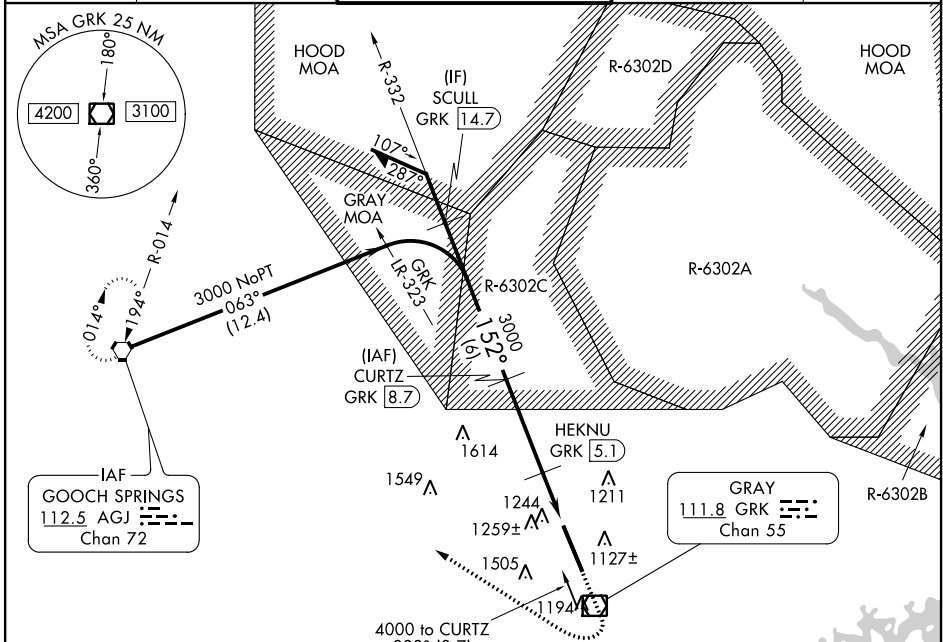


VOR/DME GRK 111.8 Chan 55	APP CRS 152°	Rwy Idg 9997 TDZE 1015 Apt Elev 1015
--	------------------------	---

VOR/DME RWY 15

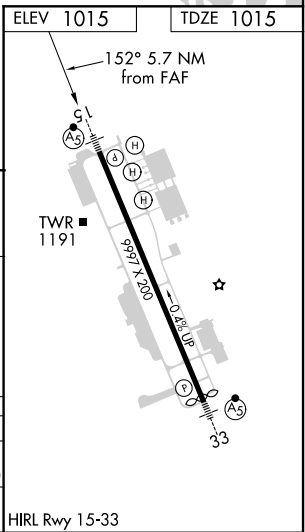
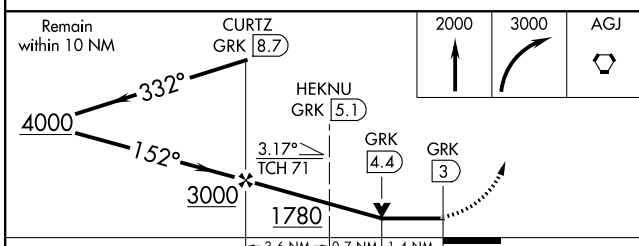
ROBERT GRAY AAF (GRK)

<p>NA Circling NA W of Rwy 15-33. For inoperative MALSR, increase S-15 Cat E visibility 1/2 mile.</p> <p>ASR/PAR</p>	<p>MALSR</p>	<p>MISSED APPROACH: Climb to 2000 then climbing right turn to 3000 direct AGJ VORTAC and hold.</p>		
<p>ATIS 124.9</p>	<p>GRAY APP CON 120.075 323.15</p>	<p>GRAY TOWER 120.75 285.5</p>	<p>GND CON 121.8 279.5</p>	<p>CLNC DEL 126.2 251.1</p>



A1616±

Cat E procedure turn not authorized.



CATEGORY	A	B	C	D	E
S-15	1520/24	505 (600-1/2)	1520/50	505 (600-1)	1520/60 505 (600-1/4)
CIRCLING	1540-1	525 (600-1)	1560-1 1/2 545 (600-1 1/2)	1620-2 605 (700-2)	1740-2 1/2 725 (800-2 1/2)

HIRL Rwy 15-33

SC-3, 08 OCT 2020 to 05 NOV 2020

SC-3, 08 OCT 2020 to 05 NOV 2020