

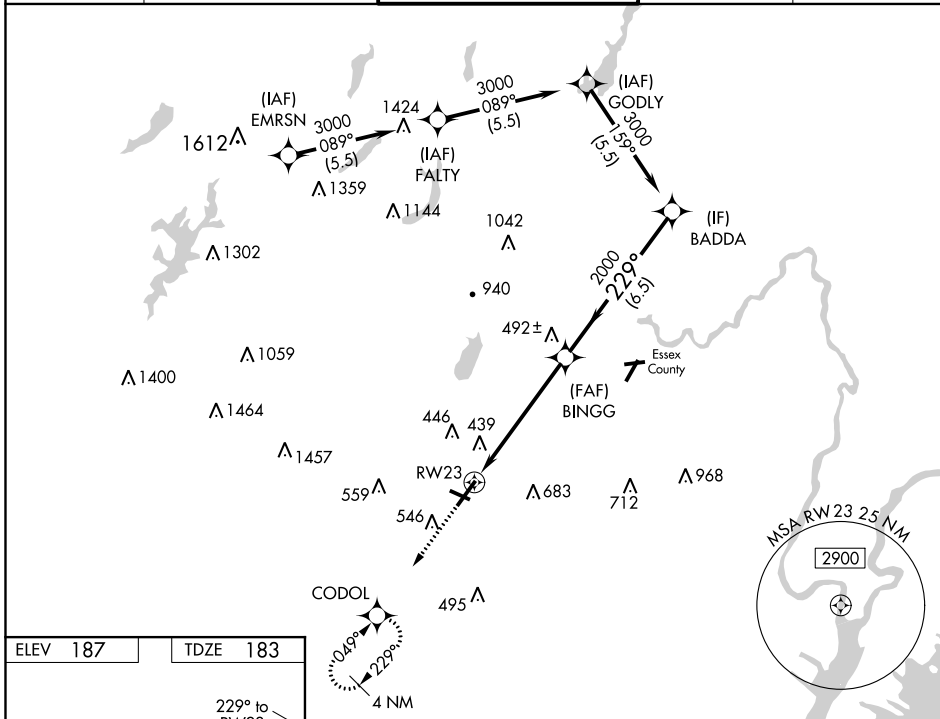
WAAS CH <b>45621</b> <b>W23A</b>	APP CRS <b>229°</b>	Rwy Idg TDZE Apt Elev	<b>5998</b> <b>183</b> <b>187</b>
--	------------------------	-----------------------------	---

# RNAV (GPS) Z RWY 23

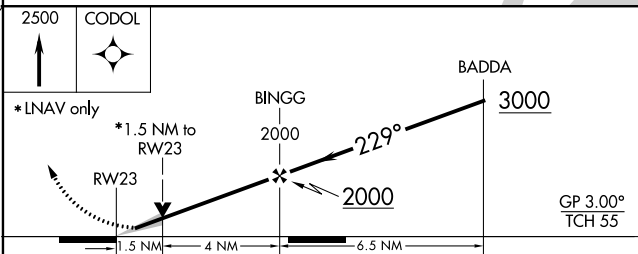
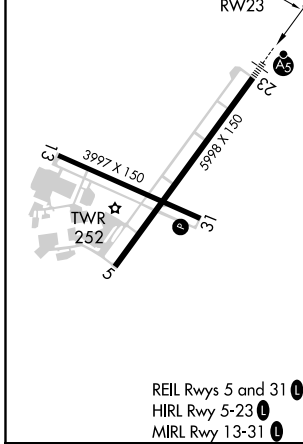
MORRISTOWN MUNI (MMU)

RNP APCH.	MALSR 	MISSED APPROACH: Climb to 2500 direct CODOL and hold, continue climb-in-hold to 2500.
<p><b>⚠</b> Circling to Rwy 13, 31 NA at night. For uncompensated Baro-VNAV systems, LNAV/VNAV NA below -15°C or above 54°C. For inop ALS, increase LNAV/VNAV all Cats visibility to 1½ SM, and LNAV Cat C/D to 1¾ SM.</p>		

ATIS <b>124.25</b>	NEW YORK APP CON <b>127.6 379.9</b>	MORRISTOWN TOWER * <b>118.1</b> (CTAF) <b>353.9</b>	GND CON <b>134.2</b>	CLNC DEL <b>128.6</b>
-----------------------	--	--	-------------------------	--------------------------



ELEV 187	TDZE 183
----------	----------



CATEGORY	A	B	C	D
LPV DA		383-1½	200 (200-½)	
LNAV/VNAV DA		748-1¼	565 (600-1¼)	
LNAV MDA	700-½	517 (600-½)	700-1	517 (600-1)
<b>C</b> CIRCLING	860-1 673 (700-1)	900-1 713 (800-1)	1000-2½ 813 (900-2½)	1200-3 1013 (1100-3)

NE-2, 08 OCT 2020 to 05 NOV 2020

NE-2, 08 OCT 2020 to 05 NOV 2020